

# Arboricultural Report

Tree Survey,  
Arboricultural Impact Assessment &  
Arboricultural Method Statement

In relation to the development proposal at:

**Alterations to Shoreline GA01**

**Lands at Baldoye**

**Dublin 13**

On behalf of:

**The Shoreline Partnership**

**May 2021**

**191012-PD-11-A**

**CHARLES MCCORKELL**  
ARBORICULTURAL CONSULTANCY

# Contents

<b>Section 1: Arboricultural Impact Assessment</b>	<b>3</b>
1      Summary	3
2      Introduction	4
3      Observations & Context	6
4      Local Planning Policy	7
5      Technical Information	8
6      Analysis of the Proposal in Respect of Trees	9
7      Discussion & Conclusion	10
8      Recommendations	11
 <b>Section 2: Arboricultural Method Statement</b>	 <b>12</b>
 <b>Appendices</b>	 <b>14</b>
Appendix A – Schedules	14
Appendix B – Plans	15

# Section 1: Arboricultural Impact Assessment

## 1 Summary

- 1.1 This arboricultural report has been commissioned by The Shoreline Partnership to provide information to assist all parties involved in the planning process to make balanced judgements with regard to arboricultural features in relation to the proposed residential development at Shoreline GA01, Lands at Baldoyle, Dublin 13 (the 'Application Site').
- 1.2 This report includes:
- an assessment of the trees, their quality and value in accordance with BS 5837:2012 - Trees in relation to design, demolition and construction;
  - the site context and observations on the trees;
  - local planning policies relevant to the consideration of trees on the site;
  - the impact of the proposed development upon the tree population in and around the site;
  - methods of reducing impacts on trees; and
  - measures to be taken to protect trees during the proposed works.
- 1.3 In conclusion, the proposed development is achievable in both arboricultural terms and in relation to local planning policy as it relates to trees.
- 1.4 All trees and hedgerows located within the Application Site boundary are required to be removed to facilitate the proposed development. The loss of these trees and hedgerows will have an insignificant impact on the character and appearance of the local area due to their low and poor quality and limited public amenity value.
- 1.5 The loss of trees has been taken into consideration and a detailed landscape design that includes significant new tree planting has been proposed. Given the neglected nature of the site at present, the development provides a good opportunity to enhance the overall landscape character of the local area by improving the quality and diversity of tree cover.
- 1.6 The proposed new tree planting and landscaping can enhance the amenities of the site and have a positive environmental and visual impact on the overall appearance and character of the local area.

## **2 Introduction**

### **Instructions**

- 2.1 This arboricultural report has been commissioned by The Shoreline Partnership to provide information to assist all parties involved in the planning process to make balanced judgements with regard to arboricultural features in relation to the proposed residential development at Shoreline GA01, Lands at Baldoyle, Dublin 13 (the 'Application Site').

### **Development proposal**

- 2.2 The development will consist of alterations to the permitted development, as permitted under FCC Reg. Ref. 16A/0412, ABP Reg. Ref. ABP-248970 (as amended by F20A/0258 and F21A/0046) of 544 no. residential units (385 no. apartments and 159 no. houses), retail and a crèche, to the development of 882 no. new residential dwellings (747 no. apartments, 135 no. houses), residential tenant amenity, retail, crèche, parking, and public realm, over a total site area of c. 9.1 ha, and site development area of c. 8.89 ha. Landscaping will include extensive communal amenity areas, and significant public open space provision.

### **Qualification and experience**

- 2.3 This report has been prepared by Charles McCorkell. Charles is a Chartered Arboricultural Consultant dealing with trees in relation to all forms of human activity, including the built environment. He is a Professional Member of the Institute of Chartered Foresters, a Professional Member of the Arboricultural Association, a qualified professional tree inspector (LANTRA), and has a BSc Honours Degree in Arboriculture from the University of Central Lancashire.

### **Scope and limitations**

- 2.4 The survey undertaken is not a health and safety assessment of trees; however, trees identified as imminently dangerous will have been highlighted and recommendations made, where appropriate.
- 2.5 The contents of this report are the copyright of Charles McCorkell Arboricultural Consultancy and may not be distributed or copied without the author's permission.

## Methodology and guidance

- 2.6 The author of this report has referred to *British Standard 5837: Trees in relation to design, demolition and construction (2012)* which provides a methodology for the assessment of trees and other significant vegetation on development sites.
- 2.7 BS 5837 (2012) is intended to assist decision making with regard to existing and proposed trees and sets out the principles and procedures to be applied to achieve a harmonious relationship between existing and new trees and structures that can be sustained for the long term.
- 2.8 The BS 5837 (2012) recommends the National Joint Utilities Group (NJUG) document *Guidelines for the planning, installation and maintenance of utility apparatus in the proximity to trees*. Volume 4, issue 2. London: NJUG, 2007, as a normative reference for guidance on the installation of utilities within proximity to trees.

## Supporting information

- 2.9 This report should be read in conjunction with the following supporting documents attached to this report.

Document	Reference	Location
Arboricultural Method Statement	N/A	Section 2
Tree Schedule	191012-PD-10-A	Appendix A
Tree Work Schedule	191012-PD-12-B	Appendix A
Tree Survey Plan	191012-P-10-B	Appendix B
Tree Removals Plan	191012-P-11-B	Appendix B

## Definitions

- 2.10 **Root Protection Area (RPA)** – a layout design tool indicating the area surrounding a tree that contains sufficient rooting volume to ensure the survival of the tree.
- 2.11 **Tree Protection Zone (TPZ)** – an area based on the RPA in m<sup>2</sup> identified by an arboriculturist, to be protected during development, including demolition and construction work, by the use of barriers and/or ground protection fit for purpose to ensure the successful long-term retention of a tree.

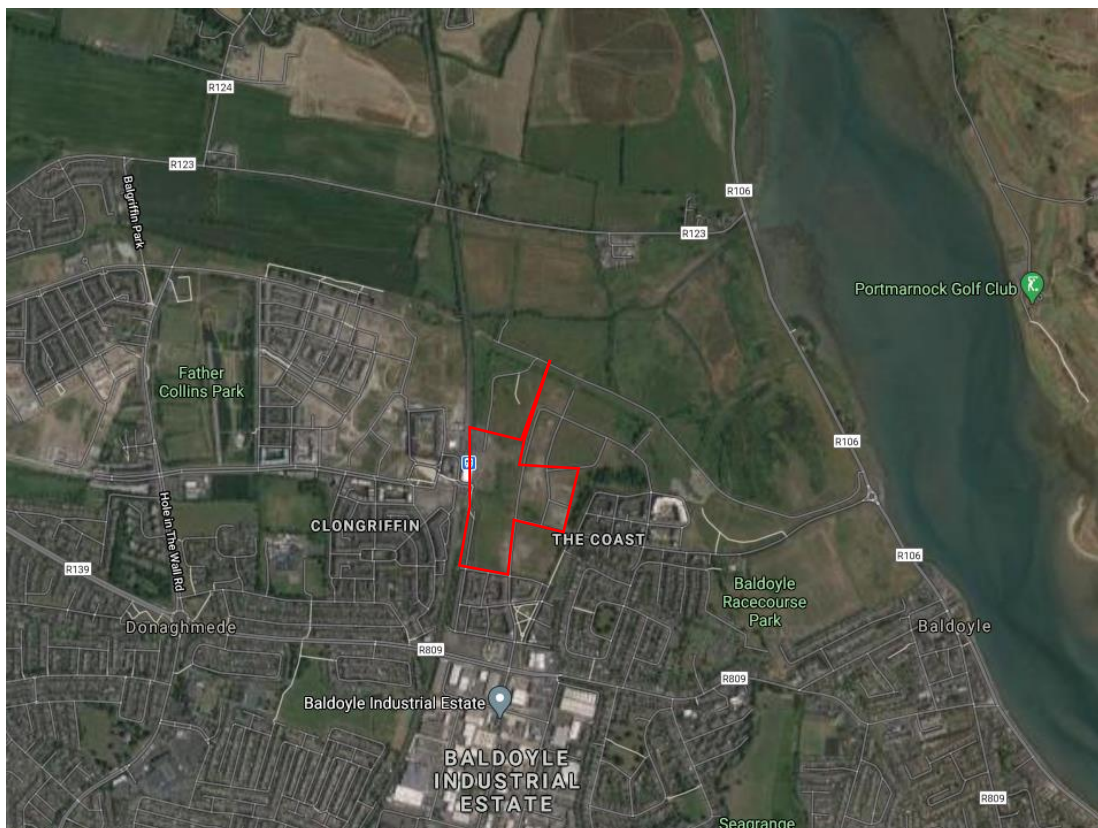
### 3 Observations & Context

#### Site visit

- 3.1 The site was visited by Charles McCorkell in November 2019 and October 2020. The purpose of these visits was to survey trees and hedgerows which may be of significance to the proposed development. The surveys were carried out in accordance with BS 5837:2012 and from ground level only.

#### Site location and description

- 3.2 The Application Site comprises of Growth Area 01 of the Baldoyle - Stapolin Local Area Plan 2013 and is located on the north-western edge of Baldoyle (Map 1). The site is currently vacant and is made up of overgrown grass fields and scrub, and some basic site infrastructure such as roads and services.
- 3.3 The area surrounding the site comprises of residential and commercial properties to the south and agricultural grass fields to the north. The Clongriffin railway station is located along the western boundary, while to the southeast, new residential properties are currently being constructed under planning approval F16A/0412.



**Map 1 (Google 2021):** Red line highlighting the approximate location of the site boundary within the local area.

## 4 Local Planning Policy

### The Fingal Development Plan 2017 – 2023

- 4.1 The Fingal Development Plan 2017 – 2023 was adopted in March 2017 and contains several policies that relate to trees, woodlands and hedgerows. Saved policies relating to this application include:

#### **Chapter 9. Natural Heritage – Ecological Corridors and Stepping-Stones Including Trees and Hedgerows**

##### Objective NH27

Protect existing woodlands, trees and hedgerows which are of amenity or biodiversity value and/or contribute to landscape character and ensure that proper provision is made for their protection and management.

#### **Chapter 12. Development Management Standards – Tree Policy**

##### Objective DMS77

Protect, preserve and ensure the effective management of trees and groups of trees.

##### Objective DMS78

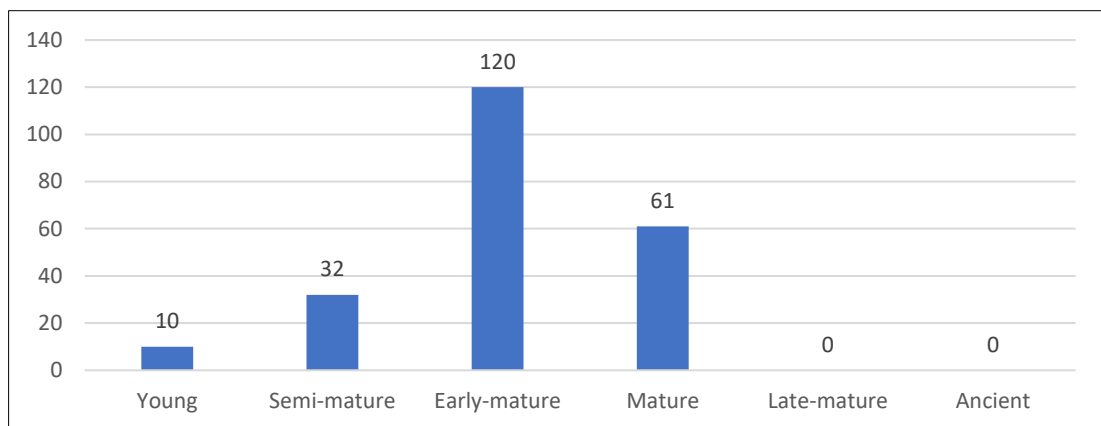
Ensure, during the course of development, trees and hedgerows that are conditioned for retention are fully protected in accordance with '*BS5837 (2012) Trees in relation to the Design, Demolition and Construction – Recommendations*' or as may be updated.

## 5 Technical Information

### Tree data

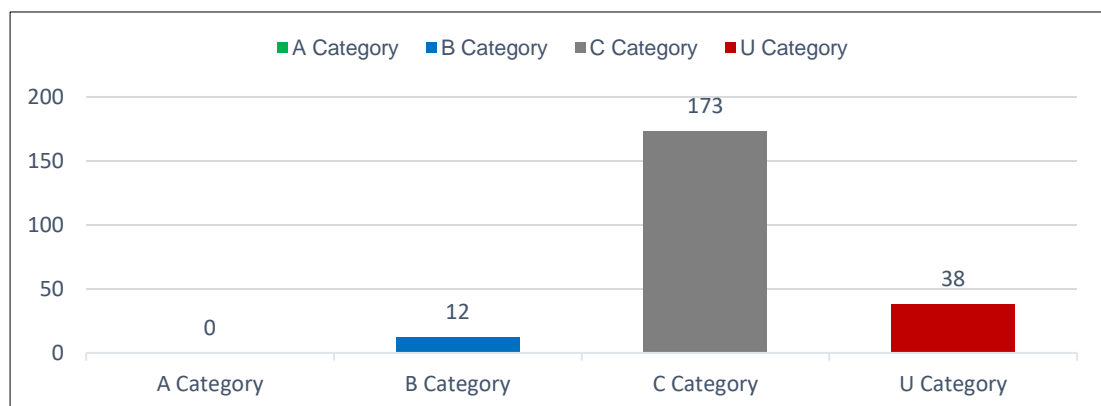
- 5.1 The Tree Survey Plan at Appendix B illustrates the location of trees and hedgerows, the extent of the spread of their crowns, and their root protection areas. Dimensions, comments and information for each tree and hedgerow are given in the Tree Schedule at Appendix A.
- 5.2 The tree survey, as shown on the Tree Survey Plan at Appendix B, was carried out within lands owned by the applicant. The majority of these trees are located outside this Application Site boundary.

### Life stage analysis



**Figure 1:** Life stage analysis of the survey entries recorded. The majority of trees are of an early-mature age and are located outside the Application Site boundary.

### BS5837 (2012) category breakdown



**Figure 2:** Breakdown of BS5837:2012 categories of the survey entries recorded. The majority of trees and hedgerows assessed are of low quality (C Category). Only low and poor quality trees were assessed within the Application Site boundary.



## 6 Analysis of the Proposal in Respect of Trees

### Arboricultural Impacts

- 6.1 **Loss of trees** – The proposed development will require the removal of 16 individually recorded trees, one hedgerow, two groups of trees / shrubs and the part removal of one hedgerow. The proposed removals are specified within the Tree Work Schedule at Appendix A and are highlighted on the Tree Removals Plan at Appendix B.
- 6.2 Of the 20 survey entries proposed to be removed, 13 trees and groups are of low quality and value (C Category) and seven trees are of poor quality (U Category). A breakdown of the proposed tree removals according to their BS5837:2012 category is outline within Figure 3.



**Figure 3:** Breakdown of removals required to facilitate the development.

- 6.3 All trees located within the Application Site boundary are required to be removed to facilitate the proposed development. These trees are of low and poor quality and limited public amenity value. Their loss, in visual terms, will have an insignificant impact on the character and appearance of the surrounding landscape and local area.

### Arboricultural mitigation

- 6.4 A detailed landscape plan has been designed and will form part of the planning application for the development proposal. This design includes the planting of a large number of new high-quality trees. This proposed new planting will mitigate the loss of trees required to be removed and in the medium to long term, increase local canopy cover and have a positive impact on the character and appearance of the site and the surrounding local landscape.

## **7 Discussion**

### **General Change**

- 7.1 In visual terms, the loss of trees required to facilitate the development will not have a significant impact on the character and appearance of the surrounding local area. This is due to their low and poor quality and limited public amenity value.
- 7.2 The development provides a good opportunity to enhance the landscape character of the site by improving the quality and diversity of tree cover. The proposed tree planting and landscaping can enhance the amenities of the site and have a positive environmental and visual impact on the overall appearance and character of the local surrounding area.

### **Sustainability**

- 7.3 The approach to trees and landscaping on the site is sustainable and best practice has been followed from an arboricultural and landscape perspective. The landscape proposal will include new high-quality tree planting, which will, over a relatively short space of time, after the development is complete, more than mitigate for the loss of trees and significantly improve canopy cover, bringing a positive benefit to the site and the local area, generally.

### **Proposal in relation to local planning policy**

- 7.4 The proposal complies with local planning policies NH27; DMS77 and DMS78 as they relate to trees. There are no trees of high quality or high public amenity value required to be removed. Tree removals have been confined to those of low and poor quality only. The design has taken the loss of these trees into consideration and significant new high-quality tree planting has been proposed. Such planting will mitigate the loss of the trees and hedgerows and enhance the overall tree cover within the local area.

### **Conclusion**

- 7.5 The proposal has been assessed in accordance with BS5837:2012. Provided the recommendations and methods of work, as outlined within this report are adhered to, the proposed development can be successfully carried out without having a negative impact on the character or appearance of the surrounding landscape.

## 8 Recommendations

- 8.1 The proposal should be carried out in accordance with the recommendations outlined within this report.

### **Tree Works**

- 8.2 All tree works are required to be carried out in accordance with best working practice BS3998:2010 – *Tree Work Recommendations* and by a reputable arboricultural contractor.

### **Arboricultural mitigation**

- 8.3 Tree planting is proposed to mitigate the loss of trees and must be carried out and maintained as specified by the Landscape Architect.
- 8.4 All new tree planting must be carried out in accordance with BS 8545:2014 *Trees: from nursery to independence in the landscape. Recommendations*.
- 8.5 A diverse selection of tree species should be planted to increase the resilience of the tree population on the site and within the local area due to the current risks posed by pests, diseases and climate change.
- 8.6 New tree planting should take into consideration the mature growing size of the trees proposed, to ensure that a harmonious relationship between trees and buildings and hard surfaces can be sustained for the long term, without the need for unnecessary pruning works or removals.

## Section 2: Arboricultural Method Statement

<b>Introduction</b>	
<p>This report has been prepared in accordance with British Standard 5837: Trees in relation to design, demolition and construction – Recommendations (2012) which provides a methodology for the assessment and protection of trees and other significant vegetation on development sites.</p>	
<b>Sequence of Operations</b>	
<ul style="list-style-type: none"> <li>• Proposed tree works.</li> <li>• Enabling works, including the installation of a site compound.</li> <li>• Construction, including the installation of drainage and services.</li> <li>• Landscaping.</li> </ul> <p><i>Alternative sequences can be discussed and agreed with the local authority and project manager if required.</i></p>	
<b>Supervision</b>	
<p>All key / critical activities that will affect trees during construction will be inspected and monitored by the approved arboricultural consultant.</p> <ul style="list-style-type: none"> <li>• Inspection of tree works prior to the commencement of works; and</li> <li>• Supervision during any other works that may affect retained tree.</li> </ul>	
<b>Arboricultural Method Statement</b>	
<b>Scope</b>	<b>Methodology</b>
<b>Tree Works</b>	<p>Please refer to the Tree Work Schedule at Appendix A for a list of all proposed tree works. The location of trees to be removed are highlighted on the Tree Removals Plan at Appendix B.</p> <p>It is the responsibility of the Site Manager to ensure all tree works have been approved by the local planning authority.</p> <p>All tree works will be carried out by a reputable arboricultural contractor in accordance with the recommendations given in BS 3998:2010 – Tree Work Recommendations.</p>

	<p>All tree works should be carried out in accordance with Section 40 of the Wildlife Act 1976 and Section 46 of the Wildlife (Amendment) Act 2000.</p> <p>It is the responsibility of the arboricultural contractor to ensure that no protected species are harmed whilst carrying out site clearance or tree surgery works.</p>
<p><b>General Principals to Avoid Damage to Trees</b></p>	<p>All tree works will be carried out in accordance with the recommendations given in BS 3998 (2010).</p> <p>No fires will be permitted within 20m of the crown of any tree.</p> <p>Any liquid materials spilled on site will be immediately cleared up and removed from the site. If liquid fuel or cement products are spilled within 2m of the tree protection zone, the contractor will report the incident to the arboricultural consultant immediately.</p> <p>The contractor will report any damage to trees or shrubs, whether caused by construction activities or from any other cause, to the arboricultural consultant immediately.</p>

## Appendix A - Schedule

Document	Reference	Revision
Tree Schedule	191012-PD-10	A
Tree Work Schedule	191012-PD-12	B

## 191012 - GA01 Project Shoreline, Baldoyle

Tree ID	No. Species	Height (m)	Stem diameter (cm)	No. of Stems	CROWN SPREAD (m)								Crown clearance (m)	L.B. (m)	Life stage	Condition Notes	Survey date	RPA (m <sup>2</sup> )	RPR (m)	Life expectancy (yrs)	BS Category
					N	NE	E	SE	S	SW	W	NW									
Tree T100	1 Acer pseudoplatanus (Sycamore)	13.0	45	1	0.0		1.0		4.0		6.0		3.0		Mature	Structural condition Fair. Physiological condition Fair. Competition - Adjacent trees. Deadwood - Minor. Ivy or climbing plant. Suppressed crown - Major. Unbalanced crown - Major.	13/11/2019	91.6	5.4	20-40	C2
Tree T101	1 Ulmus glabra (Wych Elm)	11.0	44	1	1.0		4.0		5.0		3.0		2.0		Mature	Structural condition Fair. Physiological condition Fair. Competition - Adjacent trees. Ivy or climbing plant. Suppressed crown - Minor. Unbalanced crown - Minor. Tree not included on topographical survey, location estimated. Unable to inspect tree closely due to ivy cover.	13/11/2019	87.6	5.3	10-20	C2
Tree T102	1 Prunus cerasifera (Cherry Plum (Myrobalan))	8.0	57	1	4.0		4.0		5.0		3.0		0.0		Mature	Structural condition Fair. Physiological condition Fair. Fork - Weak with included bark. Ivy or climbing plant.	13/11/2019	147.0	6.8	10-20	C2
Tree T103	1 Acer pseudoplatanus (Sycamore)	11.0	65 COM	3	2.0		4.0		6.0		6.0		0.0		Mature	Structural condition Fair. Physiological condition Fair. Competition - Adjacent trees. Deadwood - Minor. Decay / structural defect - Base. Decay / structural defect - Open cavity / cavities. Fork - Weak with included bark. Pruning wounds - Decayed. Unbalanced crown - Minor. Decay at base of western stem.	13/11/2019	196.0	7.9	20-40	C2
Tree T104	1 Acer pseudoplatanus (Sycamore)	11.0	56 COM	16	4.5		5.5		1.0		6.0		0.0		Early Mature	Structural condition Fair. Physiological condition Fair. Competition - Adjacent trees. Coppice stool - Coppice origin / Mature stems. Deadwood - Minor. Multi-stemmed. Suppressed crown - Minor. Unbalanced crown - Minor.	13/11/2019	141.9	6.7	20-40	C2
Tree T105	1 Acer pseudoplatanus (Sycamore)	10.0	40 COM	2	2.5		5.0		1.5		4.0		0.0		Early Mature	Structural condition Poor. Physiological condition Fair. Competition - Adjacent trees. Deadwood - Minor. Ivy or climbing plant. Pruning wounds - Decayed.	13/11/2019	73.5	4.8	10-20	C2

Stem **green** Estimated valueStem **AVE** Average stem diameter for tree groupsStem **COM** Combined stem diameter in accordance with BS5837

L.B. Height of lowest branch attachment (m) - where relevant

The survey information in this schedule has been gathered following a BS5837 survey for planning purposes. Where hazardous trees have been noted recommendations for works may have been made but this survey cannot be relied upon as a full health and safety assessment of the trees.

# 191012 - GA01 Project Shoreline, Baldoyle

Tree ID	No. Species	Height (m)	Stem diameter (cm)	No. of Stems	CROWN SPREAD (m)								Crown clearance (m)	L.B. (m)	Life stage	Condition Notes	Survey date	RPA (m <sup>2</sup> )	RPR (m)	Life expectancy (yrs)	BS Category
					N	NE	E	SE	S	SW	W	NW									
Tree T106	1 Fraxinus excelsior (Ash)	15.0	51 COM	12	4.0		4.0		7.0		7.0		0.0		Early Mature	Structural condition Poor. Physiological condition Fair. Access to inspect base - Restricted / obscured. Coppice stool - Coppice origin / Mature stems. Deadwood - Minor. Decay / structural defect - Base. Fork - Weak with included bark. Ivy or climbing plant. Multi-stemmed. Pruning wounds - Decayed.	13/11/2019	122.1	6.2	10-20	C2
Tree T107	1 Acer pseudoplatanus (Sycamore)	12.0	50	1	4.0		3.5		5.0		7.0		0.0		Mature	Structural condition Fair. Physiological condition Fair. Deadwood - Minor. Epicormic growth - Base. Ivy or climbing plant. Pruning wounds - Decayed. Suppressed crown - Minor. Unbalanced crown - Minor.	13/11/2019	113.1	6.0	10-20	C2
Tree T108	1 Acer pseudoplatanus (Sycamore)	10.0	28 COM	4	4.0		5.0		2.5		3.0		0.0		Early Mature	Structural condition Fair. Physiological condition Fair. Competition - Adjacent trees. Deadwood - Minor. Epicormic growth - Base. Ivy or climbing plant. Multi-stemmed.	13/11/2019	37.6	3.5	20-40	C2
Tree T109	1 Fraxinus excelsior (Ash)	18.0	103	1	7.5		7.0		6.0		6.0		0.0		Mature	Structural condition Fair. Physiological condition Fair. Branch - Broken. Competition - Adjacent trees. Deadwood - Minor. Excavation within root zone - Suspected. Ivy or climbing plant. Root damage - Suspected. Unable to inspect tree closely due to ivy cover.	13/11/2019	479.9	12.4	20-40	B2
Tree T110	1 Acer pseudoplatanus (Sycamore)	11.0	50 COM	8	5.0		5.0		4.5		5.0		0.0		Mature	Structural condition Fair. Physiological condition Fair. Coppice stool - Coppice origin / Mature stems. Decay / structural defect - Base. Fungal fruiting body - structural decay suspected. Multi-stemmed. Pruning wounds - Decayed. Kretzschmaria deusta fungal fruiting bodies on old main stem which has failed. Tree is made up of mature regrown epicormic growth.	13/11/2019	117.3	6.1	10-20	C2
Tree T119	1 Acer pseudoplatanus (Sycamore)	12.0	20	1		2.0		2.0		1.0		2.0	9.0		Early Mature	Structural condition Poor. Physiological condition Fair. Bark wound - Minor. Competition - Adjacent trees.	13/11/2019	18.1	2.4	0-10	U

Stem **green** Estimated value

Stem **AVE** Average stem diameter for tree groups

Stem **COM** Combined stem diameter in accordance with BS5837

L.B. Height of lowest branch attachment (m) - where relevant

The survey information in this schedule has been gathered following a BS5837 survey for planning purposes. Where hazardous trees have been noted recommendations for works may have been made but this survey cannot be relied upon as a full health and safety assessment of the trees.

Page 2 of 38

Generated By

**MyTREES**  
tree management software



# 191012 - GA01 Project Shoreline, Baldoyle

Tree ID	No. Species	Height (m)	Stem diameter (cm)	No. of Stems	CROWN SPREAD (m)								Crown clearance (m)	L.B. (m)	Life stage	Condition Notes	Survey date	RPA (m <sup>2</sup> )	RPR (m)	Life expectancy (yrs)	BS Category
					N	NE	E	SE	S	SW	W	NW									
Tree T120	1 Acer pseudoplatanus (Sycamore)	13.0	33 COM	2		1.0		4.0		6.0		2.0	4.0		Early Mature	Structural condition Fair. Physiological condition Fair. Competition - Adjacent trees. Deadwood - Minor. Ivy or climbing plant. Suppressed crown - Minor. Unbalanced crown - Minor.	13/11/2019	50.1	4.0	10-20	C2
Tree T121	1 Acer pseudoplatanus (Sycamore)	13.0	42 COM	2		3.0		2.0		3.0		5.0	2.0		Early Mature	Structural condition Fair. Physiological condition Fair. Competition - Adjacent trees. Deadwood - Minor. Ivy or climbing plant. Suppressed crown - Minor. Unbalanced crown - Minor.	13/11/2019	81.4	5.1	20-40	C2
Tree T122	1 Acer pseudoplatanus (Sycamore)	12.0	25 COM	3		2.0		2.0		3.0		5.0	5.0		Early Mature	Structural condition Fair. Physiological condition Fair. Bark wound - Minor. Competition - Adjacent trees. Deadwood - Minor. Ivy or climbing plant. Suppressed crown - Minor. Unbalanced crown - Minor.	13/11/2019	30.5	3.1	10-20	C2
Tree T123	1 Acer pseudoplatanus (Sycamore)	10.0	20 COM	3		1.0		4.0		2.0		1.0	3.0		Early Mature	Structural condition Poor. Physiological condition Fair. Bark wound - Minor. Competition - Adjacent trees. Deadwood - Minor. Ivy or climbing plant. Suppressed crown - Minor. Unbalanced crown - Major.	13/11/2019	19.5	2.5	10-20	C2
Tree T124	1 Fagus sylvatica (Common Beech)	15.0	66	1		5.0		4.0		6.0		7.0	2.0		Mature	Structural condition Poor. Physiological condition Poor. Branch - Broken. Branch - Suspended. Bark wound - Physical damage or vandalism. Decline - Suspected. Deadwood - Minor. Epicormic growth - Bole / principal stems. Exposed crown - Recent. Fungal fruiting body - structural decay suspected. Pruning wounds - Decayed. Ganoderma australe fungal fruiting bodies on main stem.	13/11/2019	197.1	7.9	0-10	U
Tree T125	1 Acer pseudoplatanus (Sycamore)	13.0	73 COM	6		5.5		6.5		6.0		6.0	0.0		Mature	Structural condition Fair. Physiological condition Fair. Epicormic growth - Base. Ivy or climbing plant. Multi-stemmed. Suppressed crown - Minor. Unbalanced crown - Minor. Unable to inspect tree closely due to ivy cover.	13/11/2019	244.3	8.8	20-40	C2

Stem **green** Estimated value

Stem **AVE** Average stem diameter for tree groups

Stem **COM** Combined stem diameter in accordance with BS5837

L.B. Height of lowest branch attachment (m) - where relevant

The survey information in this schedule has been gathered following a BS5837 survey for planning purposes. Where hazardous trees have been noted recommendations for works may have been made but this survey cannot be relied upon as a full health and safety assessment of the trees.

# 191012 - GA01 Project Shoreline, Baldoyle

Tree ID	No. Species	Height (m)	Stem diameter (cm)	No. of Stems	CROWN SPREAD (m)								Crown clearance (m)	L.B. (m)	Life stage	Condition Notes	Survey date	RPA (m <sup>2</sup> )	RPR (m)	Life expectancy (yrs)	BS Category
					N	NE	E	SE	S	SW	W	NW									
Tree T128	1 Acer pseudoplatanus (Sycamore)	15.0	74	1		5.0		5.0		9.0		4.0	4.0		Mature	Structural condition Poor. Physiological condition Fair. Branch weight - Heavy. Competition - Adjacent trees. Deadwood - Minor. Decay / structural defect - Bole. Unbalanced crown - Major. Unable to inspect tree closely due to ivy cover.	13/11/2019	247.7	8.9	10-20	C2
Tree T129	1 Acer pseudoplatanus (Sycamore)	12.0	28 COM	2		1.0		4.0		3.0		2.0	4.0		Early Mature	Structural condition Fair. Physiological condition Fair. Bark wound - Minor. Competition - Adjacent trees. Deadwood - Minor. Ivy or climbing plant. Suppressed crown - Minor. Unbalanced crown - Minor.	13/11/2019	36.2	3.4	10-20	C2
Tree T132	1 Acer pseudoplatanus (Sycamore)	11.0	25 COM	2	4.0		3.0		1.0		3.0		4.5		Early Mature	Structural condition Poor. Physiological condition Fair. Bark wound - Major. Competition - Adjacent trees. Deadwood - Minor. Decay / structural defect - Bole. Fire damage - Base / bole / principal stems. Unbalanced crown - Major. Tree growing within rubble adjacent to ruin.	13/11/2019	28.3	3.0	10-20	C2
Tree T134	1 Acer pseudoplatanus (Sycamore)	14.0	27	1	4.0		2.0		0.0		2.0		7.0		Early Mature	Structural condition Poor. Physiological condition Fair. Competition - Adjacent trees. Deadwood - Minor. Ivy or climbing plant. Suppressed crown - Major. Unbalanced crown - Major. Tree growing within rubble adjacent to ruin. Unable to inspect tree closely due to ivy cover.	13/11/2019	33.0	3.2	10-20	C2
Tree T135	1 Acer pseudoplatanus (Sycamore)	14.0	36 COM	2	5.0		2.0		5.0		5.0		3.0		Early Mature	Structural condition Fair. Physiological condition Fair. Competition - Adjacent trees. Deadwood - Minor. Tree growing within rubble adjacent to ruin.	13/11/2019	61.0	4.4	20-40	C2
Tree T136	1 Acer pseudoplatanus (Sycamore)	13.0	37 COM	3	0.0		3.0		4.0		5.0		2.0		Early Mature	Structural condition Fair. Physiological condition Fair. Competition - Adjacent trees. Deadwood - Minor. Ivy or climbing plant. Suppressed crown - Major. Unbalanced crown - Major. Tree growing within rubble adjacent to ruin. Unable to inspect tree closely due to ivy cover.	13/11/2019	63.8	4.5	10-20	C2

Stem **green** Estimated value

Stem **AVE** Average stem diameter for tree groups

Stem **COM** Combined stem diameter in accordance with BS5837

L.B. Height of lowest branch attachment (m) - where relevant

The survey information in this schedule has been gathered following a BS5837 survey for planning purposes. Where hazardous trees have been noted recommendations for works may have been made but this survey cannot be relied upon as a full health and safety assessment of the trees.

Page 4 of 38

Generated By

**MyTREES**  
tree management software

# 191012 - GA01 Project Shoreline, Baldoyle

Tree ID	No. Species	Height (m)	Stem diameter (cm)	No. of Stems	CROWN SPREAD (m)								Crown clearance (m)	L.B. (m)	Life stage	Condition Notes	Survey date	RPA (m <sup>2</sup> )	RPR (m)	Life expectancy (yrs)	BS Category
Tree T137	1 Acer pseudoplatanus (Sycamore)	13.0	25	1	2.0		1.0		3.0		2.0		2.5		Early Mature	Structural condition Fair. Physiological condition Fair. Competition - Adjacent trees. Deadwood - Minor. Ivy or climbing plant. Suppressed crown - Minor. Unbalanced crown - Minor. Tree growing within rubble adjacent to ruin. Unable to inspect tree closely due to ivy cover.	13/11/2019	28.3	3.0	10-20	C2
Tree T138	1 Acer pseudoplatanus (Sycamore)	12.0	20	1	2.0		1.0		3.0		4.0		2.5		Early Mature	Structural condition Fair. Physiological condition Fair. Competition - Adjacent trees. Deadwood - Minor. Fork - Weak with included bark. Ivy or climbing plant. Suppressed crown - Minor. Unbalanced crown - Minor. Tree growing within rubble adjacent to ruin.	13/11/2019	18.1	2.4	10-20	C2
Tree T139	1 Fraxinus excelsior (Ash)	13.0	38	1	2.0		3.0		6.0		2.0		3.0		Early Mature	Structural condition Fair. Physiological condition Fair. Competition - Adjacent trees. Deadwood - Minor. Ivy or climbing plant. Suppressed crown - Minor. Unbalanced crown - Minor. Unable to inspect tree closely due to ivy cover.	13/11/2019	65.3	4.6	10-20	C2
Tree T141	1 Acer pseudoplatanus (Sycamore)	8.0	30 COM	4	1.5		2.5		4.0		1.0		3.0		Early Mature	Structural condition Poor. Physiological condition Poor. Branch - Broken. Die-back - Upper crown. Deadwood - Minor. Ivy or climbing plant. Shedding limb / limbs - Historic. Storm damage. Unable to inspect tree closely due to ivy cover.	13/11/2019	40.7	3.6	0-10	U
Tree T146	1 Acer pseudoplatanus (Sycamore)	14.0	58 COM	7	4.5		1.0		7.0		5.0		1.0		Mature	Structural condition Fair. Physiological condition Fair. Competition - Adjacent trees. Ivy or climbing plant. Multi-stemmed. Suppressed crown - Minor. Unbalanced crown - Minor.	13/11/2019	153.3	7.0	20-40	C2
Tree T147	1 Acer pseudoplatanus (Sycamore)	13.0	38 COM	5	5.5		3.0		4.0		1.0		3.0		Early Mature	Structural condition Fair. Physiological condition Fair. Competition - Adjacent trees. Ivy or climbing plant. Suppressed crown - Minor. Unbalanced crown - Minor.	13/11/2019	65.4	4.6	20-40	C2

Stem **green** Estimated value

Stem **AVE** Average stem diameter for tree groups

Stem **COM** Combined stem diameter in accordance with BS5837

L.B. Height of lowest branch attachment (m) - where relevant

The survey information in this schedule has been gathered following a BS5837 survey for planning purposes. Where hazardous trees have been noted recommendations for works may have been made but this survey cannot be relied upon as a full health and safety assessment of the trees.

Page 5 of 38

Generated By

**MyTREES**  
tree management software

# 191012 - GA01 Project Shoreline, Baldoyle

Tree ID	No. Species	Height (m)	Stem diameter (cm)	No. of Stems	CROWN SPREAD (m)								Crown clearance (m)	L.B. (m)	Life stage	Condition Notes	Survey date	RPA (m <sup>2</sup> )	RPR (m)	Life expectancy (yrs)	BS Category
					N	NE	E	SE	S	SW	W	NW									
Tree T148	1 Acer pseudoplatanus (Sycamore)	11.0	33 COM	5	2.0		2.0		4.0			3.0	1.5		Early Mature	Structural condition Fair. Physiological condition Fair. Competition - Adjacent trees. Ivy or climbing plant. Suppressed crown - Minor. Unbalanced crown - Minor.	13/11/2019	50.9	4.0	10-20	C2
Tree T149	1 Acer pseudoplatanus (Sycamore)	13.0	79 COM	7	7.0		2.0		5.0			5.0	3.0		Mature	Structural condition Fair. Physiological condition Fair. Competition - Adjacent trees. Deadwood - Minor. Ivy or climbing plant. Multi-stemmed. Unbalanced crown - Minor.	13/11/2019	285.0	9.5	20-40	C2
Tree T150	1 Acer pseudoplatanus (Sycamore)	13.5	45 COM	4		2.0		5.0		4.0		5.0	3.0		Early Mature	Structural condition Fair. Physiological condition Fair. Competition - Adjacent trees. Deadwood - Minor. Ivy or climbing plant. Unbalanced crown - Minor.	13/11/2019	92.9	5.4	20-40	C2
Tree T151	1 Acer pseudoplatanus (Sycamore)	14.0	32	1	3.0		0.0		3.0			3.0	4.0		Early Mature	Structural condition Fair. Physiological condition Fair. Competition - Adjacent trees. Deadwood - Minor. Ivy or climbing plant. Suppressed crown - Minor. Unbalanced crown - Minor.	13/11/2019	46.3	3.8	10-20	C2
Tree T152	1 Acer pseudoplatanus (Sycamore)	12.0	55	1	6.0		4.0		4.0			1.0	0.0		Mature	Structural condition Fair. Physiological condition Fair. Access to inspect base - Restricted / obscured. Branch - Broken. Competition - Adjacent trees. Crown conflict - Structure / boundary / wire / tree. Epicormic growth - Base. Ivy or climbing plant. Pruning wounds - Historic. Storm damage. Suppressed crown - Minor. Unbalanced crown - Minor. Unable to inspect tree closely due to ivy cover.	13/11/2019	136.8	6.6	10-20	C2
Tree T153	1 Acer pseudoplatanus (Sycamore)	14.0	65	1	4.0		5.5		5.0			5.5	1.5		Mature	Structural condition Fair. Physiological condition Good. Branch weight - Heavy. Epicormic growth - Base. Ivy or climbing plant.	13/11/2019	191.1	7.8	20-40	B2
Tree T154	1 Acer pseudoplatanus (Sycamore)	11.0	60	1	5.0		5.5		5.0			5.0	0.0		Mature	Structural condition Fair. Physiological condition Good. Access to inspect base - Restricted / obscured. Ivy or climbing plant. Tree growing at the edge of ruin, stem in contact with structure. Unable to inspect tree closely due to ivy cover.	13/11/2019	162.9	7.2	20-40	B2

Stem **green** Estimated value

Stem **AVE** Average stem diameter for tree groups

Stem **COM** Combined stem diameter in accordance with BS5837

L.B. Height of lowest branch attachment (m) - where relevant

The survey information in this schedule has been gathered following a BS5837 survey for planning purposes. Where hazardous trees have been noted recommendations for works may have been made but this survey cannot be relied upon as a full health and safety assessment of the trees.

Page 6 of 38

Generated By

**MyTREES**  
tree management software

# 191012 - GA01 Project Shoreline, Baldoyle

Tree ID	No. Species	Height (m)	Stem diameter (cm)	No. of Stems	CROWN SPREAD (m)								Crown clearance (m)	L.B. (m)	Life stage	Condition Notes	Survey date	RPA (m <sup>2</sup> )	RPR (m)	Life expectancy (yrs)	BS Category
Tree T155	1 Acer pseudoplatanus (Sycamore)	13.0	21 COM	2	2.0		2.0		2.0		2.0		7.0		Early Mature	Structural condition Fair. Physiological condition Fair. Competition - Adjacent trees. Deadwood - Minor. Fork - Weak with included bark. Ivy or climbing plant. Suppressed crown - Major. Tree growing within rubble adjacent to ruin. Unable to inspect tree closely due to ivy cover.	13/11/2019	20.4	2.5	10-20	C2
Tree T156	1 Acer pseudoplatanus (Sycamore)	12.0	28 COM	4	3.0		1.0		4.0		2.0		3.0		Early Mature	Structural condition Poor. Physiological condition Fair. Competition - Adjacent trees. Deadwood - Minor. Ivy or climbing plant. Suppressed crown - Major. Unbalanced crown - Major. Tree growing within rubble adjacent to ruin. Unable to inspect tree closely due to ivy cover.	13/11/2019	35.5	3.4	10-20	C2
Tree T157	1 Acer pseudoplatanus (Sycamore)	13.0	42 COM	2	1.5		3.0		4.0		1.0		2.0		Early Mature	Structural condition Fair. Physiological condition Fair. Competition - Adjacent trees. Deadwood - Minor. Fork - Weak with included bark. Ivy or climbing plant. Suppressed crown - Major. Unbalanced crown - Minor. Tree growing within rubble adjacent to ruin. Unable to inspect tree closely due to ivy cover.	13/11/2019	81.4	5.1	10-20	C2
Tree T158	1 Acer pseudoplatanus (Sycamore)	13.0	25	1	4.5		2.0		2.0		2.0		7.0		Early Mature	Structural condition Poor. Physiological condition Fair. Competition - Adjacent trees. Deadwood - Minor. Ivy or climbing plant. Suppressed crown - Major. Unbalanced crown - Minor. Tree growing within rubble adjacent to ruin. Unable to inspect tree closely due to ivy cover.	13/11/2019	28.3	3.0	10-20	C2
Tree T159	1 Acer pseudoplatanus (Sycamore)	12.0	32	1	6.0		3.0		1.0		4.0		6.0		Early Mature	Structural condition Fair. Physiological condition Fair. Competition - Adjacent trees. Deadwood - Minor. Epicormic growth - Base. Ivy or climbing plant. Suppressed crown - Minor. Unbalanced crown - Minor. Tree growing within rubble adjacent to ruin. Unable to inspect tree closely due to ivy cover.	13/11/2019	46.3	3.8	10-20	C2

Stem **green** Estimated value

Stem **AVE** Average stem diameter for tree groups

Stem **COM** Combined stem diameter in accordance with BS5837

L.B. Height of lowest branch attachment (m) - where relevant

The survey information in this schedule has been gathered following a BS5837 survey for planning purposes. Where hazardous trees have been noted recommendations for works may have been made but this survey cannot be relied upon as a full health and safety assessment of the trees.

Page 7 of 38

Generated By

**MyTREES**  
tree management software

# 191012 - GA01 Project Shoreline, Baldoyle

Tree ID	No. Species	Height (m)	Stem diameter (cm)	No. of Stems	CROWN SPREAD (m)								Crown clearance (m)	L.B. (m)	Life stage	Condition Notes	Survey date	RPA (m <sup>2</sup> )	RPR (m)	Life expectancy (yrs)	BS Category
N	NE	E	SE	S	SW	W	NW														
Tree T161	1 Acer pseudoplatanus (Sycamore)	11.0	25	1	2.0		1.0	1.0		3.0			8.0		Early Mature	Structural condition Fair. Physiological condition Fair. Competition - Adjacent trees. Deadwood - Minor. Epicormic growth - Base. Ivy or climbing plant. Pruning wounds - Decayed. Suppressed crown - Minor. Unbalanced crown - Minor. Tree growing within rubble adjacent to ruin. Unable to inspect tree closely due to ivy cover.	13/11/2019	28.3	3.0	10-20	C2
Tree T162	1 Acer pseudoplatanus (Sycamore)	10.0	30	1	5.0		2.0	1.0		5.0			3.0		Early Mature	Structural condition Fair. Physiological condition Fair. Competition - Adjacent trees. Deadwood - Minor. Ivy or climbing plant. Suppressed crown - Minor. Unbalanced crown - Minor. Main stem in direct contact with old ruin. Unable to inspect tree closely due to ivy cover.	13/11/2019	40.7	3.6	10-20	C2
Tree T163	1 Acer pseudoplatanus (Sycamore)	12.0	27	1	2.0		1.0	3.0		3.0			8.0		Early Mature	Structural condition Fair. Physiological condition Fair. Competition - Adjacent trees. Deadwood - Minor. Ivy or climbing plant. Suppressed crown - Major. Unbalanced crown - Minor. Tree growing within rubble adjacent to ruin. Unable to inspect tree closely due to ivy cover.	13/11/2019	33.0	3.2	10-20	C2
Tree T164	1 Acer pseudoplatanus (Sycamore)	8.0	32 COM	3	3.0		2.0	4.0		3.0			0.0		Early Mature	Structural condition Fair. Physiological condition Fair. Competition - Adjacent trees. Ivy or climbing plant. Suppressed crown - Minor. Unbalanced crown - Minor. Tree growing within rubble adjacent to ruin. Unable to inspect tree closely due to ivy cover.	13/11/2019	49.0	3.9	10-20	C2
Tree T165	1 Acer pseudoplatanus (Sycamore)	9.0	25 COM	3	2.0		1.0	4.5		4.0			1.0		Early Mature	Structural condition Poor. Physiological condition Fair. Branch - Broken. Competition - Adjacent trees. Deadwood - Minor. Epicormic growth - Base. Ivy or climbing plant. Suppressed crown - Minor. Unbalanced crown - Minor. Tree growing within rubble adjacent to ruin. Unable to inspect tree closely due to ivy cover.	13/11/2019	30.5	3.1	10-20	C2

Stem **green** Estimated value

Stem **AVE** Average stem diameter for tree groups

Stem **COM** Combined stem diameter in accordance with BS5837

L.B. Height of lowest branch attachment (m) - where relevant

The survey information in this schedule has been gathered following a BS5837 survey for planning purposes. Where hazardous trees have been noted recommendations for works may have been made but this survey cannot be relied upon as a full health and safety assessment of the trees.

Page 8 of 38

Generated By

**MyTREES**  
tree management software

# 191012 - GA01 Project Shoreline, Baldoyle

Tree ID	No. Species	Height (m)	Stem diameter (cm)	No. of Stems	CROWN SPREAD (m)								Crown clearance (m)	L.B. (m)	Life stage	Condition Notes	Survey date	RPA (m <sup>2</sup> )	RPR (m)	Life expectancy (yrs)	BS Category
Tree T167	1 Acer pseudoplatanus (Sycamore)	10.0	25 COM	2	0.0		2.0		4.0		2.0		1.0		Early Mature	Structural condition Fair. Physiological condition Fair. Competition - Adjacent trees. Deadwood - Minor. Ivy or climbing plant. Suppressed crown - Minor. Unbalanced crown - Minor. Tree growing within rubble adjacent to ruin. Unable to inspect tree closely due to ivy cover.	13/11/2019	29.3	3.1	10-20	C2
Tree T168	1 Acer pseudoplatanus (Sycamore)	10.0	39 COM	7	2.0		1.0		2.0		3.0		1.0		Early Mature	Structural condition Fair. Physiological condition Fair. Competition - Adjacent trees. Deadwood - Minor. Ivy or climbing plant. Suppressed crown - Major. Unbalanced crown - Minor. Tree growing within rubble adjacent to ruin. Unable to inspect tree closely due to ivy cover.	13/11/2019	71.3	4.8	10-20	C2
Tree T169	1 Acer pseudoplatanus (Sycamore)	10.0	40 COM	2	2.0		3.0		2.0		1.0		1.0		Early Mature	Structural condition Fair. Physiological condition Fair. Competition - Adjacent trees. Deadwood - Minor. Ivy or climbing plant. Suppressed crown - Major. Unbalanced crown - Minor. Tree growing within rubble adjacent to ruin. Unable to inspect tree closely due to ivy cover.	13/11/2019	73.5	4.8	10-20	C2
Tree T170	1 Acer pseudoplatanus (Sycamore)	10.0	33 COM	5	3.0		3.0		2.5		3.5		1.5		Early Mature	Structural condition Fair. Physiological condition Fair. Competition - Adjacent trees. Deadwood - Minor. Epicormic growth - Base. Ivy or climbing plant. Multi-stemmed. Suppressed crown - Major. Unbalanced crown - Minor. Tree growing within rubble adjacent to ruin. Unable to inspect tree closely due to ivy cover.	13/11/2019	50.9	4.0	10-20	C2
Tree T171	1 Acer pseudoplatanus (Sycamore)	9.0	42 COM	3	1.0		4.0		4.0		4.0		1.5		Early Mature	Structural condition Fair. Physiological condition Fair. Competition - Adjacent trees. Deadwood - Minor. Ivy or climbing plant. Suppressed crown - Major. Unbalanced crown - Major. Tree growing within rubble adjacent to ruin. Unable to inspect tree closely due to ivy cover.	13/11/2019	82.1	5.1	10-20	C2
Tree T173	1 Acer pseudoplatanus (Sycamore)	12.0	40 COM	4	4.5		3.5		3.5		2.0		0.0		Early Mature	Structural condition Fair. Physiological condition Fair. Competition - Adjacent trees. Deadwood - Minor. Fork - Weak with included bark. Ivy or climbing plant. Unbalanced crown - Minor. Tree growing within rubble adjacent to ruin. Unable to inspect tree closely due to ivy cover.	13/11/2019	72.4	4.8	20-40	C2

Stem **green** Estimated value

Stem **AVE** Average stem diameter for tree groups

Stem **COM** Combined stem diameter in accordance with BS5837

L.B. Height of lowest branch attachment (m) - where relevant

The survey information in this schedule has been gathered following a BS5837 survey for planning purposes. Where hazardous trees have been noted recommendations for works may have been made but this survey cannot be relied upon as a full health and safety assessment of the trees.

Page 9 of 38

Generated By

**MyTREES**  
tree management software



# 191012 - GA01 Project Shoreline, Baldoyle

Tree ID	No. Species	Height (m)	Stem diameter (cm)	No. of Stems	CROWN SPREAD (m)								Crown clearance (m)	L.B. (m)	Life stage	Condition Notes	Survey date	RPA (m <sup>2</sup> )	RPR (m)	Life expectancy (yrs)	BS Category
Tree T174	1 Acer pseudoplatanus (Sycamore)	12.0	31 COM	3	4.0		1.0		3.5		3.5		0.0		Early Mature	Structural condition Fair. Physiological condition Fair. Competition - Adjacent trees. Deadwood - Minor. Ivy or climbing plant. Unbalanced crown - Minor. Tree growing within rubble adjacent to ruin. Unable to inspect tree closely due to ivy cover.	13/11/2019	44.0	3.7	20-40	C2
Tree T175	1 Acer pseudoplatanus (Sycamore)	11.0	45 COM	9	3.0		6.0		3.0		4.0		1.0		Early Mature	Structural condition Fair. Physiological condition Fair. Competition - Adjacent trees. Deadwood - Minor. Ivy or climbing plant. Multi-stemmed. Natural regeneration. Tree growing within rubble and adjacent to ruin. Unable to inspect tree closely due to ivy cover.	16/11/2019	91.6	5.4	10-20	C2
Tree T176	1 Acer pseudoplatanus (Sycamore)	9.0	30 COM	4	3.0		4.5		1.5		3.0		2.0		Early Mature	Structural condition Fair. Physiological condition Fair. Competition - Adjacent trees. Deadwood - Minor. Ivy or climbing plant. Unbalanced crown - Minor. Tree growing within rubble adjacent to ruin.	16/11/2019	42.2	3.7	20-40	C2
Tree T177	1 Acer pseudoplatanus (Sycamore)	11.0	24 COM	2	2.5		2.5		2.0		1.5		4.0		Early Mature	Structural condition Fair. Physiological condition Fair. Competition - Adjacent trees. Deadwood - Minor. Ivy or climbing plant. Tree growing within rubble adjacent to ruin. Unable to inspect tree closely due to ivy cover.	16/11/2019	26.1	2.9	20-40	C2
Tree T178	1 Acer pseudoplatanus (Sycamore)	12.0	30 COM	1	1.5		1.5		2.5		1.5		3.0		Early Mature	Structural condition Fair. Physiological condition Fair. Competition - Adjacent trees. Deadwood - Minor. Ivy or climbing plant. Tree in direct contact with ruin.	16/11/2019	40.7	3.6	20-40	C2
Tree T179	1 Fraxinus excelsior (Ash)	15.0	50 COM	2	8.0		2.5		6.0		4.0		6.0		Mature	Structural condition Fair. Physiological condition Fair. Branch weight - Heavy. Competition - Adjacent trees. Crown conflict - Structure / boundary / wire / tree. Deadwood - Minor. Ivy or climbing plant. Tree in direct contact with ruin.	16/11/2019	113.1	6.0	10-20	C2
Tree T180	1 Acer pseudoplatanus (Sycamore)	13.0	40 COM	2	3.5		2.5		3.0		6.0		2.0		Early Mature	Structural condition Fair. Physiological condition Fair. Deadwood - Minor. Excavation within root zone - Recent. Ivy or climbing plant. Root damage - Suspected. Tree growing within rubble adjacent to ruin.	16/11/2019	73.5	4.8	20-40	C2

Stem **green** Estimated value

Stem **AVE** Average stem diameter for tree groups

Stem **COM** Combined stem diameter in accordance with BS5837

L.B. Height of lowest branch attachment (m) - where relevant

The survey information in this schedule has been gathered following a BS5837 survey for planning purposes. Where hazardous trees have been noted recommendations for works may have been made but this survey cannot be relied upon as a full health and safety assessment of the trees.

Page 10 of 38

Generated By

**MyTREES**  
tree management software



# 191012 - GA01 Project Shoreline, Baldoyle

Tree ID	No. Species	Height (m)	Stem diameter (cm)	No. of Stems	CROWN SPREAD (m)								Crown clearance (m)	L.B. (m)	Life stage	Condition Notes	Survey date	RPA (m <sup>2</sup> )	RPR (m)	Life expectancy (yrs)	BS Category
Tree T181	1 Acer pseudoplatanus (Sycamore)	13.0	45	1	5.0		3.0		5.5		5.0		0.0		Mature	Structural condition Fair. Physiological condition Fair. Competition - Adjacent trees. Crown conflict - Structure / boundary / wire / tree. Ivy or climbing plant. Tree in direct contact with ruin. Unable to inspect tree closely due to ivy cover.	16/11/2019	91.6	5.4	10-20	C2
Group G184	8 Acer pseudoplatanus (Sycamore)	10.0	20 AVE	1									1.5		Early Mature	Structural condition Fair. Physiological condition Fair. Altered ground level - Recent. Competition - Adjacent trees. Deadwood - Minor. Excavation within root zone - Recent. Ivy or climbing plant. Natural regeneration. Root damage - Severance. Height and stem diameter are average for group. Excavation works have been carried out around group of trees, root damage evident.	16/11/2019	18.1	2.4	10-20	C2
Tree T185	1 Ulmus glabra (Wych Elm)	10.0	21 COM	2	3.0		4.0		3.0		3.0		2.5		Early Mature	Structural condition Fair. Physiological condition Fair. Branch - Broken. Branch - Suspended. Competition - Adjacent trees. Deadwood - Minor. Ivy or climbing plant. Unable to inspect tree closely due to ivy cover.	16/11/2019	20.4	2.5	10-20	C2
Tree T187	1 Ulmus glabra (Wych Elm)	12.0	41 COM	3	4.0		4.0		5.0		2.0		4.0		Early Mature	Structural condition Fair. Physiological condition Fair. Competition - Adjacent trees. Deadwood - Minor. Ivy or climbing plant. Unable to inspect tree closely due to ivy cover.	16/11/2019	78.0	5.0	10-20	C2
Tree T188	1 Acer pseudoplatanus (Sycamore)	14.0	70 COM	4	5.0		6.5		7.0		4.0		0.0		Mature	Structural condition Fair. Physiological condition Fair. Competition - Adjacent trees. Deadwood - Minor. Decay / structural defect - Localised. Epicormic growth - Base. Multi-stemmed.	16/11/2019	221.7	8.4	20-40	B2
Tree T189	1 Fraxinus excelsior (Ash)	14.0	45	1	3.5		2.5		5.0		6.0		3.0		Mature	Structural condition Fair. Physiological condition Fair. Competition - Adjacent trees. Deadwood - Minor. Ivy or climbing plant. Unbalanced crown - Minor. Unable to inspect tree closely due to ivy cover.	16/11/2019	91.6	5.4	20-40	C2

Stem **green** Estimated value

Stem **AVE** Average stem diameter for tree groups

Stem **COM** Combined stem diameter in accordance with BS5837

L.B. Height of lowest branch attachment (m) - where relevant

The survey information in this schedule has been gathered following a BS5837 survey for planning purposes. Where hazardous trees have been noted recommendations for works may have been made but this survey cannot be relied upon as a full health and safety assessment of the trees.

Page 11 of 38

Generated By

**MyTREES**  
tree management software

# 191012 - GA01 Project Shoreline, Baldoyle

Tree ID	No. Species	Height (m)	Stem diameter (cm)	No. of Stems	CROWN SPREAD (m)								Crown clearance (m)	L.B. (m)	Life stage	Condition Notes	Survey date	RPA (m <sup>2</sup> )	RPR (m)	Life expectancy (yrs)	BS Category
Tree T201	1 Fraxinus excelsior (Ash)	14.0	56 COM	11	5.0		7.0		4.0		1.5		5.0		Mature	Structural condition Fair. Physiological condition Fair. Competition - Adjacent trees. Coppice stool - Coppice origin / Mature stems. Deadwood - Minor. Fork - Weak with included bark. Ivy or climbing plant. Suppressed crown - Minor. Unbalanced crown - Minor. Unable to inspect tree closely due to ivy cover. Tree not included on topographical survey, location estimated.	16/11/2019	143.8	6.8	10-20	C2
Tree T202	1 Acer pseudoplatanus (Sycamore)	12.0	29 COM	6	1.0		1.5		1.5		5.0		3.0		Early Mature	Structural condition Fair. Physiological condition Fair. Competition - Adjacent trees. Deadwood - Minor. Ivy or climbing plant. Multi-stemmed. Suppressed crown - Major. Unbalanced crown - Major. Unable to inspect tree closely due to ivy cover.	16/11/2019	39.1	3.5	10-20	C2
Tree T203	1 Fraxinus excelsior (Ash)	14.0	40 COM	5	2.0		4.0		3.0		4.0		5.0		Early Mature	Structural condition Fair. Physiological condition Fair. Competition - Adjacent trees. Coppice stool - Coppice origin / Mature stems. Deadwood - Minor. Ivy or climbing plant. Unbalanced crown - Minor. Unable to inspect tree closely due to ivy cover.	16/11/2019	73.3	4.8	10-20	C2
Tree T204	1 Ulmus glabra (Wych Elm)	12.0	25	1	3.0		1.0		1.5		7.0		2.0		Early Mature	Structural condition Fair. Physiological condition Fair. Competition - Adjacent trees. Ivy or climbing plant. Suppressed crown - Major. Unbalanced crown - Major. Unable to inspect tree closely due to ivy cover.	16/11/2019	28.3	3.0	10-20	C2
Tree T205	1 Ulmus glabra (Wych Elm)	12.0	28	1	3.0		5.0		2.0		1.0		3.0		Early Mature	Structural condition Fair. Physiological condition Fair. Competition - Adjacent trees. Ivy or climbing plant. Suppressed crown - Major. Unbalanced crown - Major. Unable to inspect tree closely due to ivy cover.	16/11/2019	35.5	3.4	10-20	C2
Tree T206	1 Ulmus glabra (Wych Elm)	12.0	22 COM	2	2.0		3.0		3.0		3.0		1.5		Early Mature	Structural condition Fair. Physiological condition Fair. Competition - Adjacent trees. Ivy or climbing plant. Unable to inspect tree closely due to ivy cover.	16/11/2019	23.2	2.7	20-40	C2

Stem **green** Estimated value

Stem **AVE** Average stem diameter for tree groups

Stem **COM** Combined stem diameter in accordance with BS5837

L.B. Height of lowest branch attachment (m) - where relevant

The survey information in this schedule has been gathered following a BS5837 survey for planning purposes. Where hazardous trees have been noted recommendations for works may have been made but this survey cannot be relied upon as a full health and safety assessment of the trees.

Page 12 of 38

Generated By

**MyTREES**  
tree management software

# 191012 - GA01 Project Shoreline, Baldoyle

Tree ID	No. Species	Height (m)	Stem diameter (cm)	No. of Stems	CROWN SPREAD (m)								Crown clearance (m)	L.B. (m)	Life stage	Condition Notes	Survey date	RPA (m <sup>2</sup> )	RPR (m)	Life expectancy (yrs)	BS Category
Tree T207	1 Fraxinus excelsior (Ash)	8.0	35	1	0.0		3.0		3.0		3.0		3.0		Early Mature	Structural condition Poor. Physiological condition Fair. Competition - Adjacent trees. Ivy or climbing plant. Unbalanced crown - Major. Tree growing within rubble adjacent to ruin.	16/11/2019	55.4	4.2	10-20	C2
Tree T208	1 Fraxinus excelsior (Ash)	10.0	32	1	1.0		3.0		3.0		3.0		2.5		Early Mature	Structural condition Fair. Physiological condition Fair. Competition - Adjacent trees. Ivy or climbing plant. Unbalanced crown - Minor. Tree growing within rubble adjacent to ruin.	16/11/2019	46.3	3.8	10-20	C2
Tree T209	1 Fraxinus excelsior (Ash)	11.0	18	1	1.0		4.0		3.0		1.0		5.0		Semi Mature	Structural condition Fair. Physiological condition Fair. Competition - Adjacent trees. Unbalanced crown - Minor. Tree growing within rubble adjacent to ruin.	16/11/2019	14.7	2.2	20-40	C2
Tree T210	1 Acer pseudoplatanus (Sycamore)	11.0	24 COM	2	3.5		2.5		2.5		4.0		5.0		Early Mature	Structural condition Fair. Physiological condition Fair. Competition - Adjacent trees. Deadwood - Minor. Inappropriate retention costs. Unbalanced crown - Minor. Tree growing adjacent to and in direct contact with ruin.	16/11/2019	26.1	2.9	10-20	C2
Tree T211	1 Acer pseudoplatanus (Sycamore)	11.0	21 COM	2	2.5		4.0		2.5		2.5		5.0		Early Mature	Structural condition Fair. Physiological condition Fair. Competition - Adjacent trees. Deadwood - Minor. Unbalanced crown - Minor. Tree growing within rubble adjacent to ruin.	16/11/2019	20.4	2.5	10-20	C2
Tree T212	1 Acer pseudoplatanus (Sycamore)	10.0	25	1	2.0		3.0		3.0		2.0		5.0		Early Mature	Structural condition Fair. Physiological condition Fair. Competition - Adjacent trees. Ivy or climbing plant. Tree growing within rubble and adjacent to ruin. Unable to inspect tree closely due to ivy cover.	16/11/2019	28.3	3.0	20-40	C2
Tree T213	1 Acer pseudoplatanus (Sycamore)	10.0	39 COM	2	2.5		4.5		4.5		2.5		2.0		Early Mature	Structural condition Fair. Physiological condition Fair. Branch - Broken. Branch - Suspended. Competition - Adjacent trees. Deadwood - Minor. Ivy or climbing plant. Tree growing within rubble. Unable to inspect tree closely due to ivy cover.	16/11/2019	70.9	4.8	10-20	C2

Stem **green** Estimated value

Stem **AVE** Average stem diameter for tree groups

Stem **COM** Combined stem diameter in accordance with BS5837

L.B. Height of lowest branch attachment (m) - where relevant

The survey information in this schedule has been gathered following a BS5837 survey for planning purposes. Where hazardous trees have been noted recommendations for works may have been made but this survey cannot be relied upon as a full health and safety assessment of the trees.

# 191012 - GA01 Project Shoreline, Baldoyle

Tree ID	No. Species	Height (m)	Stem diameter (cm)	No. of Stems	CROWN SPREAD (m)								Crown clearance (m)	L.B. (m)	Life stage	Condition Notes	Survey date	RPA (m <sup>2</sup> )	RPR (m)	Life expectancy (yrs)	BS Category
N	NE	E	SE	S	SW	W	NW														
Tree T214	1 Acer pseudoplatanus (Sycamore)	9.0	40 COM	5	2.0		4.0		3.0		4.0		1.5		Early Mature	Structural condition Fair. Physiological condition Fair. Competition - Adjacent trees. Crown conflict - Structure / boundary / wire / tree. Inappropriate retention costs. Ivy or climbing plant. Multi-stemmed. Tree growing within rubble and in direct contact with ruin. Unable to inspect tree closely due to ivy cover.	16/11/2019	73.3	4.8	10-20	C2
Tree T215	1 Acer pseudoplatanus (Sycamore)	11.0	53 COM	3	4.0		5.0		5.0		4.0		1.0		Mature	Structural condition Fair. Physiological condition Fair. Branch - Broken. Branch - Suspended. Competition - Adjacent trees. Deadwood - Minor. Ivy or climbing plant. Unable to inspect tree closely due to ivy cover.	16/11/2019	128.9	6.4	20-40	C2
Tree T217	1 Ulmus glabra (Wych Elm)	10.0	18	1	2.0		1.5		2.0		2.5		3.0		Early Mature	Structural condition Fair. Physiological condition Fair. Competition - Adjacent trees. Ivy or climbing plant. Suppressed crown - Minor. Unable to inspect tree closely due to ivy cover.	16/11/2019	14.7	2.2	10-20	C2
Tree T219	1 Fraxinus excelsior (Ash)	15.0	53 COM	2	4.0		5.0		4.0		2.0		7.0		Mature	Structural condition Fair. Physiological condition Fair. Competition - Adjacent trees. Deadwood - Minor. Fork - Weak with included bark. Ivy or climbing plant. Suppressed crown - Minor. Unbalanced crown - Minor. Unable to inspect tree closely due to ivy cover.	16/11/2019	130.7	6.4	10-20	C2
Tree T220	1 Acer pseudoplatanus (Sycamore)	11.0	25 COM	2	3.0		3.5		1.0		1.0		5.0		Early Mature	Structural condition Fair. Physiological condition Fair. Branch - Broken. Branch - Suspended. Competition - Adjacent trees. Deadwood - Minor. Suppressed crown - Major. Unbalanced crown - Major.	16/11/2019	28.4	3.0	10-20	C2
Tree T222	1 Acer pseudoplatanus (Sycamore)	14.0	61 COM	6	6.0		4.0		4.0		3.5		0.0		Mature	Structural condition Fair. Physiological condition Fair. Competition - Adjacent trees. Deadwood - Minor. Ivy or climbing plant. Multi-stemmed. Suppressed crown - Minor. Unbalanced crown - Minor. Unable to inspect tree closely due to ivy cover.	16/11/2019	169.6	7.3	10-20	C2

Stem **green** Estimated value

Stem **AVE** Average stem diameter for tree groups

Stem **COM** Combined stem diameter in accordance with BS5837

L.B. Height of lowest branch attachment (m) - where relevant

The survey information in this schedule has been gathered following a BS5837 survey for planning purposes. Where hazardous trees have been noted recommendations for works may have been made but this survey cannot be relied upon as a full health and safety assessment of the trees.

Page 14 of 38

Generated By

**MyTREES**  
tree management software

# 191012 - GA01 Project Shoreline, Baldoyle

Tree ID	No. Species	Height (m)	Stem diameter (cm)	No. of Stems	CROWN SPREAD (m)								Crown clearance (m)	L.B. (m)	Life stage	Condition Notes	Survey date	RPA (m <sup>2</sup> )	RPR (m)	Life expectancy (yrs)	BS Category
N	NE	E	SE	S	SW	W	NW														
Tree T223	1 Fraxinus excelsior (Ash)	14.0	44 COM	5	1.0		2.0		6.0		6.5		0.0		Mature	Structural condition Fair. Physiological condition Fair. Competition - Adjacent trees. Coppice stool - Coppice origin / Mature stems. Deadwood - Minor. Suppressed crown - Minor. Unbalanced crown - Minor.	16/11/2019	90.5	5.4	10-20	C2
Tree T224	1 Acer pseudoplatanus (Sycamore)	14.0	48 COM	6	3.0		1.0		5.0		4.5		0.0		Mature	Structural condition Fair. Physiological condition Fair. Branch - Broken. Branch - Suspended. Competition - Adjacent trees. Deadwood - Minor. Ivy or climbing plant. Multi-stemmed. Unable to inspect tree closely due to ivy cover.	16/11/2019	108.6	5.9	10-20	C2
Tree T225	1 Ulmus glabra (Wych Elm)	14.0	43 COM	3	4.0		6.5		2.0		4.5		1.0		Early Mature	Structural condition Fair. Physiological condition Good. Competition - Adjacent trees. Deadwood - Minor. Ivy or climbing plant. Multi-stemmed. Unable to inspect tree closely due to ivy cover.	16/11/2019	84.8	5.2	20-40	B2
Tree T226	1 Ulmus glabra (Wych Elm)	13.0	28	1	1.0		1.5		3.5		2.0		2.0		Early Mature	Structural condition Fair. Physiological condition Fair. Competition - Adjacent trees. Ivy or climbing plant. Multi-stemmed. Suppressed crown - Minor. Unbalanced crown - Minor. Unable to inspect tree closely due to ivy cover.	16/11/2019	35.5	3.4	20-40	C2
Tree T227	1 Ulmus glabra (Wych Elm)	12.0	18	1	4.5		2.0		0.0		2.0		1.0		Early Mature	Structural condition Fair. Physiological condition Fair. Competition - Adjacent trees. Ivy or climbing plant. Suppressed crown - Major. Unbalanced crown - Major. Unable to inspect tree closely due to ivy cover.	16/11/2019	14.7	2.2	10-20	C2
Tree T228	1 Fraxinus excelsior (Ash)	13.0	74 COM	19	5.5		5.0		3.0		5.5		2.0		Mature	Structural condition Fair. Physiological condition Fair. Competition - Adjacent trees. Coppice stool - Coppice origin / Mature stems. Deadwood - Minor. Fork - Weak with included bark. Ivy or climbing plant. Multi-stemmed.	16/11/2019	248.4	8.9	10-20	C2
Tree T229	1 Ulmus glabra (Wych Elm)	12.0	35	1	2.0		4.0		1.0		3.0		1.0		Early Mature	Structural condition Fair. Physiological condition Fair. Competition - Adjacent trees. Epicormic growth - Base. Ivy or climbing plant. Unable to inspect tree closely due to ivy cover.	16/11/2019	55.4	4.2	10-20	C2

Stem **green** Estimated value

Stem **AVE** Average stem diameter for tree groups

Stem **COM** Combined stem diameter in accordance with BS5837

L.B. Height of lowest branch attachment (m) - where relevant

The survey information in this schedule has been gathered following a BS5837 survey for planning purposes. Where hazardous trees have been noted recommendations for works may have been made but this survey cannot be relied upon as a full health and safety assessment of the trees.

Page 15 of 38

Generated By

**MyTREES**  
tree management software

# 191012 - GA01 Project Shoreline, Baldoyle

Tree ID	No. Species	Height (m)	Stem diameter (cm)	No. of Stems	CROWN SPREAD (m)								Crown clearance (m)	L.B. (m)	Life stage	Condition Notes	Survey date	RPA (m <sup>2</sup> )	RPR (m)	Life expectancy (yrs)	BS Category
N	NE	E	SE	S	SW	W	NW														
Tree T230	1 Fraxinus excelsior (Ash)	12.0	48 COM	2	3.0		5.5		5.5		2.0		2.0		Mature	Structural condition Fair. Physiological condition Poor. Competition - Adjacent trees. Decline - Suspected. Deadwood - Minor. Ivy or climbing plant. Suppressed crown - Minor. Unbalanced crown - Minor. Unable to inspect tree closely due to ivy cover.	16/11/2019	106.0	5.8	10-20	C2
Tree T231	1 Acer pseudoplatanus (Sycamore)	12.0	40	1	5.5		1.5		5.0		4.0		1.0		Early Mature	Structural condition Fair. Physiological condition Good. Competition - Adjacent trees. Deadwood - Minor. Ivy or climbing plant. Suppressed crown - Minor. Unbalanced crown - Minor. Unable to inspect tree closely due to ivy cover.	16/11/2019	72.4	4.8	20-40	C2
Tree T232	1 Acer pseudoplatanus (Sycamore)	10.0	43 COM	2	1.5		5.0		3.0		3.0		1.0		Early Mature	Structural condition Fair. Physiological condition Poor. Competition - Adjacent trees. Deadwood - Minor. Ivy or climbing plant. Suppressed crown - Minor. Unbalanced crown - Minor. Unable to inspect tree closely due to ivy cover.	16/11/2019	83.7	5.2	10-20	C2
Tree T233	1 Acer pseudoplatanus (Sycamore)	8.0	42 COM	2	2.5		2.5		2.5		2.5		1.0		Early Mature	Structural condition Poor. Physiological condition Dead. Dead tree / trees. Unable to inspect tree closely due to ivy cover.	16/11/2019	81.4	5.1	0-10	U
Tree T246	1 Populus alba (White Poplar/Abele)	17.0	45	1	4.0		6.0		4.0		1.0		5.0		Mature	Structural condition Poor. Physiological condition Fair. Competition - Adjacent trees. Deadwood - Minor. Ivy or climbing plant. Suppressed crown - Major. Unbalanced crown - Major. Unable to inspect tree closely due to ivy cover.	22/11/2019	91.6	5.4	10-20	C2
Tree T249	1 Fagus sylvatica (Common Beech)	20.0	68	1	4.5		4.0		4.0		5.0		0.0		Mature	Structural condition Fair. Physiological condition Fair. Branch - Broken. Deadwood - Minor. Ivy or climbing plant. Storm damage. Unable to inspect tree closely due to ivy cover.	22/11/2019	209.2	8.2	20-40	B2

Stem **green** Estimated value

Stem **AVE** Average stem diameter for tree groups

Stem **COM** Combined stem diameter in accordance with BS5837

L.B. Height of lowest branch attachment (m) - where relevant

The survey information in this schedule has been gathered following a BS5837 survey for planning purposes. Where hazardous trees have been noted recommendations for works may have been made but this survey cannot be relied upon as a full health and safety assessment of the trees.

Page 16 of 38

Generated By

**MyTREES**  
tree management software

# 191012 - GA01 Project Shoreline, Baldoyle

Tree ID	No. Species	Height (m)	Stem diameter (cm)	No. of Stems	CROWN SPREAD (m)								Crown clearance (m)	L.B. (m)	Life stage	Condition Notes	Survey date	RPA (m <sup>2</sup> )	RPR (m)	Life expectancy (yrs)	BS Category
					N	NE	E	SE	S	SW	W	NW									
Tree T250	1 Fraxinus excelsior (Ash)	18.0	74	1	4.0		6.0		4.0		4.5		2.0		Mature	Structural condition Poor. Physiological condition Poor. Branch weight - Heavy. Competition - Adjacent trees. Die-back - Upper crown. Decline - Evident / observed. Decay / structural defect in crown limb / limbs - Extensive. Ivy or climbing plant. Shedding limb / limbs - Historic. Storm damage. Unable to inspect tree closely due to ivy cover.	22/11/2019	247.7	8.9	0-10	U
Tree T253	1 Fraxinus excelsior (Ash)	19.0	92	1	5.0		7.0		4.0		4.0		4.0		Mature	Structural condition Poor. Physiological condition Poor. Access to inspect base - Restricted / obscured. Branch weight - Heavy. Crown reduction - Historic. Die-back - Throughout crown. Decline - Evident / observed. Decay / structural defect in crown limb / limbs - Extensive. Deadwood - Major. Ivy or climbing plant. Unable to inspect tree closely due to ivy cover.	22/11/2019	382.9	11.0	0-10	U
Tree T255	1 Fagus sylvatica (Common Beech)	10.0	52	1	5.0		5.5		4.0		4.5		4.0		Mature	Structural condition Fair. Physiological condition Fair. Ivy or climbing plant. Pruning wounds - Historic. Top of tree has been historically removed.	22/11/2019	122.3	6.2	20-40	C2
Tree T256	1 Fraxinus excelsior (Ash)	10.0	25 COM	3	2.0		2.0		1.0		2.0		2.0		Early Mature	Structural condition Fair. Physiological condition Fair. Competition - Adjacent trees. Deadwood - Minor. Multi-stemmed. Unbalanced crown - Minor.	22/11/2019	30.5	3.1	10-20	C2
Tree T257	1 Fraxinus excelsior (Ash)	10.0	19	1	1.0		2.0		2.0		2.5		4.0		Early Mature	Structural condition Fair. Physiological condition Fair. Competition - Adjacent trees. Deadwood - Minor. Multi-stemmed. Unbalanced crown - Minor.	22/11/2019	16.3	2.3	10-20	C2
Tree T258	1 Fraxinus excelsior (Ash)	10.0	25 COM	3	1.5		3.0		1.5		2.0		2.0		Early Mature	Structural condition Fair. Physiological condition Fair. Access to inspect base - Restricted / obscured. Competition - Adjacent trees. Deadwood - Minor. Multi-stemmed. Unbalanced crown - Minor. Unable to inspect tree closely due to dense scrub.	22/11/2019	30.5	3.1	10-20	C2

Stem **green** Estimated value

Stem **AVE** Average stem diameter for tree groups

Stem **COM** Combined stem diameter in accordance with BS5837

L.B. Height of lowest branch attachment (m) - where relevant

The survey information in this schedule has been gathered following a BS5837 survey for planning purposes. Where hazardous trees have been noted recommendations for works may have been made but this survey cannot be relied upon as a full health and safety assessment of the trees.

Page 17 of 38

Generated By

**MyTREES**  
tree management software



# 191012 - GA01 Project Shoreline, Baldoyle

Tree ID	No. Species	Height (m)	Stem diameter (cm)	No. of Stems	CROWN SPREAD (m)								Crown clearance (m)	L.B. (m)	Life stage	Condition Notes	Survey date	RPA (m <sup>2</sup> )	RPR (m)	Life expectancy (yrs)	BS Category
Tree T259	1 Fraxinus excelsior (Ash)	10.0	39 COM	3	3.0		5.0		3.5		5.0		1.5		Early Mature	Structural condition Fair. Physiological condition Fair. Competition - Adjacent trees. Deadwood - Minor. Ivy or climbing plant. Leaning trunk - Minor. Multi-stemmed. Unbalanced crown - Minor. Unable to inspect tree closely due to ivy cover.	22/11/2019	69.0	4.7	10-20	C2
Tree T260	1 Fagus sylvatica (Common Beech)	14.0	60	1	2.5		2.5		2.5		3.0		0.0		Mature	Structural condition Poor. Physiological condition Poor. Die-back - Upper crown. Decline - Evident / observed. Deadwood - Major. Decay / structural defect - Principal stems. Ivy or climbing plant. Pruning wounds - Historic. Top of tree is dead, lower growth forming new canopy.	22/11/2019	162.9	7.2	0-10	U
Tree T261	1 Fagus sylvatica (Common Beech)	19.0	65	1	5.0		4.0		4.0		5.0		15.0		Mature	Structural condition Poor. Physiological condition Poor. Access to inspect base - Not possible. Die-back - Throughout crown. Decline - Evident / observed. Decay / structural defect in crown limb / limbs - Minor. Deadwood - Minor. Decay / structural defect - Suspected. Root decay - Suspected. Tree is not tagged as access to stem is restricted. Unable to inspect tree closely due to dense scrub.	22/11/2019	191.1	7.8	0-10	U
Tree T262	1 Fagus sylvatica (Common Beech)	14.0	58	1	7.0		5.5		2.0		5.5		1.0		Mature	Structural condition Poor. Physiological condition Poor. Die-back - Upper crown. Decline - Evident / observed. Decay / structural defect in crown limb / limbs - Localised. Deadwood - Major. Decay / structural defect - Principal stems. Unbalanced crown - Major.	22/11/2019	152.2	7.0	0-10	U
Tree T263	1 Acer pseudoplatanus (Sycamore)	13.0	60	1	5.5		6.0		5.0		5.0		0.0		Mature	Structural condition Poor. Physiological condition Poor. Die-back - Upper crown. Decline - Evident / observed. Deadwood - Major. Epicormic growth - Base. Ivy or climbing plant. Pruning wounds - Decayed. Mature epicormic growth at base. Top of tree is dead, lower growth forming new canopy.	22/11/2019	162.9	7.2	0-10	U
Tree T264	1 Ulmus glabra (Wych Elm)	10.0	32 COM	3	3.0		3.0		3.0		4.0		0.0		Early Mature	Structural condition Fair. Physiological condition Fair. Competition - Adjacent trees. Ivy or climbing plant. Multi-stemmed. Rubbing limbs.	22/11/2019	46.4	3.8	10-20	C2

Stem **green** Estimated value

Stem **AVE** Average stem diameter for tree groups

Stem **COM** Combined stem diameter in accordance with BS5837

L.B. Height of lowest branch attachment (m) - where relevant

The survey information in this schedule has been gathered following a BS5837 survey for planning purposes. Where hazardous trees have been noted recommendations for works may have been made but this survey cannot be relied upon as a full health and safety assessment of the trees.

Page 18 of 38

Generated By

**MyTREES**  
tree management software



# 191012 - GA01 Project Shoreline, Baldoyle

Tree ID	No. Species	Height (m)	Stem diameter (cm)	No. of Stems	CROWN SPREAD (m)								Crown clearance (m)	L.B. (m)	Life stage	Condition Notes	Survey date	RPA (m <sup>2</sup> )	RPR (m)	Life expectancy (yrs)	BS Category
Tree T265	1 Fagus sylvatica (Common Beech)	19.0	78	1	4.0		1.5	4.0	6.5				0.0		Mature	Structural condition Poor. Physiological condition Poor. Die-back - Throughout crown. Decline - Evident / observed. Deadwood - Minor. Fungal fruiting body - structural decay suspected. Ivy or climbing plant. Root decay - Suspected. Root damage - Suspected. Ganoderma australe fungal fruiting bodies on stem base.	22/11/2019	275.2	9.4	0-10	U
Tree T266	1 Fagus sylvatica (Common Beech)	18.0	62	1	3.0		3.0	4.5	5.0				4.0		Mature	Structural condition Poor. Physiological condition Poor. Die-back - Throughout crown. Decline - Evident / observed. Deadwood - Minor. Root decay - Suspected. Root damage - Suspected. Ganoderma australe fungal fruiting bodies on stem base.	22/11/2019	173.9	7.4	0-10	U
Tree T267	1 Fagus sylvatica (Common Beech)	13.0	60	1	3.0		6.0	4.0	2.0				2.5		Mature	Structural condition Poor. Physiological condition Poor. Deadwood - Minor. Pruning wounds - Decayed. Pruning wounds - Historic. Root damage - Suspected. Shedding limb / limbs - Historic. Storm damage.	22/11/2019	162.9	7.2	10-20	C2
Tree T268	1 Acer pseudoplatanus (Sycamore)	11.0	45	1	4.0		4.0	3.0	4.5				0.0		Mature	Structural condition Fair. Physiological condition Fair. Branch - Suspended. Die-back - Upper crown. Decay / structural defect in crown limb / limbs - Localised. Epicormic growth - Base. Ivy or climbing plant. Shedding limb / limbs - Historic. Storm damage. Unable to inspect tree closely due to ivy cover. Top of tree has failed.	22/11/2019	91.6	5.4	10-20	C2
Tree T301	1 Fraxinus excelsior (Ash)	13.0	49 COM	2	1.0		3.0	7.0	1.0				6.0		Mature	Structural condition Poor. Physiological condition Fair. Deadwood - Minor. Ivy or climbing plant. Leaning trunk - Major. Root plate movement - Historic (suspected unstable).	16/11/2019	110.8	5.9	0-10	U
Tree T302	1 Acer pseudoplatanus (Sycamore)	13.0	57 COM	2	5.0		4.0	3.5	6.0				1.0		Mature	Structural condition Fair. Physiological condition Fair. Branch - Suspended. Competition - Adjacent trees. Deadwood - Minor. Ivy or climbing plant. Unbalanced crown - Minor. Unable to inspect tree closely due to ivy cover.	16/11/2019	147.0	6.8	20-40	B2

Stem **green** Estimated value

Stem **AVE** Average stem diameter for tree groups

Stem **COM** Combined stem diameter in accordance with BS5837

L.B. Height of lowest branch attachment (m) - where relevant

The survey information in this schedule has been gathered following a BS5837 survey for planning purposes. Where hazardous trees have been noted recommendations for works may have been made but this survey cannot be relied upon as a full health and safety assessment of the trees.

Page 19 of 38

Generated By

**MyTREES**  
tree management software

# 191012 - GA01 Project Shoreline, Baldoyle

Tree ID	No. Species	Height (m)	Stem diameter (cm)	No. of Stems	CROWN SPREAD (m)								Crown clearance (m)	L.B. (m)	Life stage	Condition Notes	Survey date	RPA (m <sup>2</sup> )	RPR (m)	Life expectancy (yrs)	BS Category
					N	NE	E	SE	S	SW	W	NW									
Tree T303	1 Ulmus glabra (Wych Elm)	11.0	36 COM	6	3.0		2.0		4.0		4.0		0.0		Early Mature	Structural condition Fair. Physiological condition Fair. Competition - Adjacent trees. Epicormic growth - Base. Ivy or climbing plant. Suppressed crown - Minor. Unbalanced crown - Minor. Unable to inspect tree closely due to ivy cover.	16/11/2019	61.1	4.4	10-20	C2
Tree T304	1 Acer pseudoplatanus (Sycamore)	13.0	68 COM	2	2.5		4.5		6.0		7.0		1.5		Mature	Structural condition Fair. Physiological condition Fair. Competition - Adjacent trees. Deadwood - Minor. Fork - Weak with included bark. Ivy or climbing plant. Unbalanced crown - Minor. Unable to inspect tree closely due to ivy cover.	16/11/2019	211.7	8.2	20-40	B2
Tree T305	1 Acer pseudoplatanus (Sycamore)	14.0	77	1	6.0		5.0		6.0		7.0		2.5		Mature	Structural condition Fair. Physiological condition Fair. Competition - Adjacent trees. Deadwood - Minor. Ivy or climbing plant. Pruning wounds - Decayed. Unable to inspect tree closely due to ivy cover.	16/11/2019	268.2	9.2	20-40	B2
Tree T401	1 Ulmus glabra (Wych Elm)	12.0	32	1	3.0		3.0		1.0		4.0		5.0		Early Mature	Structural condition Fair. Physiological condition Fair. Competition - Adjacent trees. Ivy or climbing plant. Suppressed crown - Minor. Unbalanced crown - Minor. Tree not included on topographical survey, location estimated. Unable to inspect tree closely due to ivy cover.	13/11/2019	46.3	3.8	10-20	C2
Tree T402	1 Sambucus nigra (Elder)	6.0	30	1	3.0		3.0		3.0		4.0		0.0		Mature	Structural condition Poor. Physiological condition Fair. Branch - Broken. Branch - Suspended. Competition - Adjacent trees. Deadwood - Minor. Ivy or climbing plant. Unable to inspect tree closely due to ivy cover.	13/11/2019	40.7	3.6	10-20	C2
Tree T403	1 Crataegus monogyna (Common Hawthorn/Quick/May)	6.0	20	1	2.0		2.0		2.0		2.0		0.0		Early Mature	Structural condition Fair. Physiological condition Fair. Ivy or climbing plant. Suppressed crown - Major. Unable to inspect tree closely due to ivy cover.	13/11/2019	18.1	2.4	10-20	C2

Stem **green** Estimated value

Stem **AVE** Average stem diameter for tree groups

Stem **COM** Combined stem diameter in accordance with BS5837

L.B. Height of lowest branch attachment (m) - where relevant

The survey information in this schedule has been gathered following a BS5837 survey for planning purposes. Where hazardous trees have been noted recommendations for works may have been made but this survey cannot be relied upon as a full health and safety assessment of the trees.

Page 20 of 38

Generated By

**MyTREES**  
tree management software

# 191012 - GA01 Project Shoreline, Baldoyle

Tree ID	No. Species	Height (m)	Stem diameter (cm)	No. of Stems	CROWN SPREAD (m)								Crown clearance (m)	L.B. (m)	Life stage	Condition Notes	Survey date	RPA (m <sup>2</sup> )	RPR (m)	Life expectancy (yrs)	BS Category
Tree T404	1 Acer pseudoplatanus (Sycamore)	6.0	38 COM	15	2.5	2.5	2.5	2.5	2.5	2.5	2.5	2.5	0.0		Early Mature	Structural condition Poor. Physiological condition Fair. Crown conflict - Structure / boundary / wire / tree. Coppice stool - Coppice origin / Mature stems. Inappropriate retention costs. Inappropriate species / location. Multi-stemmed. Pruning wounds - Historic. Unable to inspect tree closely due to ivy cover.	13/11/2019	67.9	4.6	0-10	U
Tree T405	1 Fagus sylvatica (Common Beech)	14.0	75	1	5.0	5.0	5.0	5.0	5.0	5.0	5.0	5.0	0.0		Mature	Structural condition Poor. Physiological condition Dead. Fallen tree / trees - Whole tree.	13/11/2019	254.5	9.0	0-10	U
Tree T406	1 Fraxinus excelsior (Ash)	12.0	40	1	3.0	3.0	3.0	3.0	3.0	3.0	3.0	3.0	0.0		Early Mature	Structural condition Poor. Physiological condition Dead. Fallen tree / trees - Whole tree.	13/11/2019	72.4	4.8	0-10	U
Tree T407	1 Sambucus nigra (Elder)	7.0	33 COM	5	2.5	2.5	2.5	2.5	2.5	2.5	2.5	2.5	0.0		Mature	Structural condition Poor. Physiological condition Fair. Branch - Broken. Deadwood - Minor. Ivy or climbing plant. Multi-stemmed.	13/11/2019	50.9	4.0	0-10	U
Tree T408	1 Acer pseudoplatanus (Sycamore)	12.5	25	1	1.5	3.5	4.0	3.0	3.5	3.5	3.5	3.5	3.5		Early Mature	Structural condition Fair. Physiological condition Fair. Competition - Adjacent trees. Deadwood - Minor. Ivy or climbing plant. Suppressed crown - Minor. Unbalanced crown - Minor.	13/11/2019	28.3	3.0	10-20	C2
Tree T409	1 Acer pseudoplatanus (Sycamore)	15.5	66	1	8.0	4.0	7.0	6.5	3.0	3.0	3.0	3.0	3.0		Mature	Structural condition Poor. Physiological condition Fair. Branch weight - Heavy. Branch - Broken. Bark wound - Minor. Die-back - Upper crown. Deadwood - Minor. Ivy or climbing plant. Poor past pruning. Pruning wounds - Decayed. Pruning wounds - Historic.	13/11/2019	197.1	7.9	10-20	C2
Tree T410	1 Acer pseudoplatanus (Sycamore)	9.0	20	1	0.0	1.5	2.0	1.0	3.0	3.0	3.0	3.0	3.0		Early Mature	Structural condition Poor. Physiological condition Fair. Ivy or climbing plant. Shedding limb / limbs - Historic. Shedding limb / limbs - Major. Storm damage. Top of tree has failed.	13/11/2019	18.1	2.4	0-10	U

Stem **green** Estimated value

Stem **AVE** Average stem diameter for tree groups

Stem **COM** Combined stem diameter in accordance with BS5837

L.B. Height of lowest branch attachment (m) - where relevant

The survey information in this schedule has been gathered following a BS5837 survey for planning purposes. Where hazardous trees have been noted recommendations for works may have been made but this survey cannot be relied upon as a full health and safety assessment of the trees.

Page 21 of 38

Generated By

**MyTREES**  
tree management software

# 191012 - GA01 Project Shoreline, Baldoyle

Tree ID	No. Species	Height (m)	Stem diameter (cm)	No. of Stems	CROWN SPREAD (m)								Crown clearance (m)	L.B. (m)	Life stage	Condition Notes	Survey date	RPA (m <sup>2</sup> )	RPR (m)	Life expectancy (yrs)	BS Category
Tree T411	1 Acer pseudoplatanus (Sycamore)	12.0	51 COM	3	N	NE	E	SE	S	SW	W	NW	2.0		Mature	Structural condition Fair. Physiological condition Fair. Competition - Adjacent trees. Deadwood - Minor. Ivy or climbing plant. Storm damage. Unbalanced crown - Minor. Unable to inspect tree closely due to ivy cover.	13/11/2019	122.1	6.2	10-20	C2
Tree T412	1 Acer pseudoplatanus (Sycamore)	13.0	24 COM	2		2.0		2.0		2.0		2.0	9.0		Early Mature	Structural condition Poor. Physiological condition Fair. Access to inspect base - Restricted / obscured. Deadwood - Minor. Exposed crown - Historic.	13/11/2019	26.1	2.9	10-20	C2
Tree T413	1 Acer pseudoplatanus (Sycamore)	14.0	45	1	5.0		3.0		4.0		1.5		4.0		Mature	Structural condition Fair. Physiological condition Fair. Competition - Adjacent trees. Deadwood - Minor. Fork - Weak with included bark. Ivy or climbing plant. Suppressed crown - Minor. Unbalanced crown - Minor. Unable to inspect tree closely due to ivy cover.	13/11/2019	91.6	5.4	20-40	C2
Tree T414	1 Acer pseudoplatanus (Sycamore)	8.0	13	1	0.0		1.5		4.0		1.0		4.0		Semi Mature	Structural condition Fair. Physiological condition Fair. Competition - Adjacent trees. Leaning trunk - Minor. Suppressed crown - Major. Unbalanced crown - Major.	13/11/2019	7.6	1.6	10-20	C2
Tree T415	1 Acer pseudoplatanus (Sycamore)	7.0	35	1	1.0		1.0		3.0		1.0		0.0		Early Mature	Structural condition Poor. Physiological condition Dead. Dead tree / trees.	13/11/2019	55.4	4.2	0-10	U
Tree T416	1 Acer pseudoplatanus (Sycamore)	12.0	20 COM	2	1.5		1.5		2.5		1.5		0.0		Early Mature	Structural condition Poor. Physiological condition Fair. Bark wound - Major. Competition - Adjacent trees. Deadwood - Minor. Decay / structural defect - Principal stems. Ivy or climbing plant.	13/11/2019	19.2	2.5	0-10	U
Tree T417	1 Acer pseudoplatanus (Sycamore)	12.0	12	1	1.5		1.5		1.5		1.5		0.0		Semi Mature	Structural condition Fair. Physiological condition Fair. Competition - Adjacent trees. Ivy or climbing plant. Suppressed crown - Major. Tree growing within rubble adjacent to ruin. Unable to inspect tree closely due to ivy cover.	13/11/2019	6.5	1.4	10-20	C2

Stem **green** Estimated value

Stem **AVE** Average stem diameter for tree groups

Stem **COM** Combined stem diameter in accordance with BS5837

L.B. Height of lowest branch attachment (m) - where relevant

The survey information in this schedule has been gathered following a BS5837 survey for planning purposes. Where hazardous trees have been noted recommendations for works may have been made but this survey cannot be relied upon as a full health and safety assessment of the trees.

Page 22 of 38

Generated By

**MyTREES**  
tree management software

# 191012 - GA01 Project Shoreline, Baldoyle

Tree ID	No. Species	Height (m)	Stem diameter (cm)	No. of Stems	CROWN SPREAD (m)								Crown clearance (m)	L.B. (m)	Life stage	Condition Notes	Survey date	RPA (m <sup>2</sup> )	RPR (m)	Life expectancy (yrs)	BS Category
Tree T418	1 Acer pseudoplatanus (Sycamore)	13.0	20	1	4.5		3.0	3.0	0.0				2.5		Early Mature	Structural condition Fair. Physiological condition Fair. Competition - Adjacent trees. Deadwood - Minor. Suppressed crown - Minor. Unbalanced crown - Minor. Tree growing within rubble adjacent to ruin.	13/11/2019	18.1	2.4	10-20	C2
Tree T419	1 Sambucus nigra (Elder)	7.0	26 COM	5	4.0		2.0	0.0	2.0				0.0		Mature	Structural condition Poor. Physiological condition Poor. Branch - Broken. Branch - Suspended. Die-back - Upper crown. Deadwood - Major. Ivy or climbing plant. Suppressed crown - Major. Tree growing within rubble adjacent to ruin.	13/11/2019	32.6	3.2	0-10	U
Tree T420	1 Acer pseudoplatanus (Sycamore)	7.0	25 COM	2	4.0		1.5	1.0	3.0				2.0		Early Mature	Structural condition Poor. Physiological condition Poor. Competition - Adjacent trees. Decline - Suspected. Ivy or climbing plant. Suppressed crown - Minor. Unbalanced crown - Minor. Tree growing within rubble adjacent to ruin.	13/11/2019	28.3	3.0	0-10	U
Tree T421	1 Fraxinus excelsior (Ash)	12.0	20	1	2.0		1.0	2.0	2.0				6.0		Early Mature	Structural condition Fair. Physiological condition Fair. Competition - Adjacent trees. Ivy or climbing plant. Suppressed crown - Major. Unbalanced crown - Minor. Tree growing within rubble adjacent to ruin. Unable to inspect tree closely due to ivy cover.	13/11/2019	18.1	2.4	10-20	C2
Tree T422	1 Acer pseudoplatanus (Sycamore)	11.0	22 COM	2	1.5		1.0	2.5	5.0				0.0		Early Mature	Structural condition Poor. Physiological condition Fair. Branch - Broken. Competition - Adjacent trees. Deadwood - Minor. Ivy or climbing plant. Suppressed crown - Major. Unbalanced crown - Major. Tree growing within rubble adjacent to ruin.	13/11/2019	22.6	2.7	10-20	C2
Tree T423	1 Fraxinus excelsior (Ash)	11.0	15	1	2.0		1.0	2.0	4.0				5.0		Semi Mature	Structural condition Fair. Physiological condition Fair. Competition - Adjacent trees. Ivy or climbing plant. Suppressed crown - Minor. Unbalanced crown - Minor. Tree growing within rubble adjacent to ruin. Unable to inspect tree closely due to ivy cover.	13/11/2019	10.2	1.8	10-20	C2

Stem **green** Estimated value

Stem **AVE** Average stem diameter for tree groups

Stem **COM** Combined stem diameter in accordance with BS5837

L.B. Height of lowest branch attachment (m) - where relevant

The survey information in this schedule has been gathered following a BS5837 survey for planning purposes. Where hazardous trees have been noted recommendations for works may have been made but this survey cannot be relied upon as a full health and safety assessment of the trees.

Page 23 of 38

Generated By

**MyTREES**  
tree management software

# 191012 - GA01 Project Shoreline, Baldoyle

Tree ID	No. Species	Height (m)	Stem diameter (cm)	No. of Stems	CROWN SPREAD (m)								Crown clearance (m)	L.B. (m)	Life stage	Condition Notes	Survey date	RPA (m <sup>2</sup> )	RPR (m)	Life expectancy (yrs)	BS Category
Tree T424	1 Sambucus nigra (Elder)	5.0	20	1	2.5	3.0	2.5	3.0					1.0		Early Mature	Structural condition Fair. Physiological condition Fair. Competition - Adjacent trees. Deadwood - Minor. Ivy or climbing plant. Suppressed crown - Major. Tree growing within rubble adjacent to ruin. Unable to inspect tree closely due to ivy cover.	13/11/2019	18.1	2.4	10-20	C2
Tree T425	1 Acer pseudoplatanus (Sycamore)	10.0	14	1	0.0	1.0	2.0	1.0					4.0		Semi Mature	Structural condition Fair. Physiological condition Fair. Competition - Adjacent trees. Ivy or climbing plant. Suppressed crown - Minor. Unbalanced crown - Minor. Tree growing within rubble adjacent to ruin. Unable to inspect tree closely due to ivy cover.	13/11/2019	8.9	1.7	10-20	C2
Tree T426	1 Acer pseudoplatanus (Sycamore)	12.0	25 COM	2	2.0	1.0	2.5	1.5					3.0		Early Mature	Structural condition Poor. Physiological condition Fair. Competition - Adjacent trees. Ivy or climbing plant. Suppressed crown - Major. Unbalanced crown - Minor. Tree growing within rubble adjacent to ruin. Unable to inspect tree closely due to ivy cover.	13/11/2019	28.3	3.0	10-20	C2
Tree T427	1 Acer pseudoplatanus (Sycamore)	9.0	33 COM	5	2.0	1.5	0.0	1.5					5.0		Early Mature	Structural condition Poor. Physiological condition Poor. Competition - Adjacent trees. Die-back - Upper crown. Decline - Evident / observed. Deadwood - Minor. Ivy or climbing plant. Suppressed crown - Minor. Unbalanced crown - Minor. Tree growing within rubble adjacent to ruin. Unable to inspect tree closely due to ivy cover.	13/11/2019	50.9	4.0	0-10	U
Tree T428	1 Acer pseudoplatanus (Sycamore)	13.0	34 COM	3	2.0	3.0	3.0	3.0					4.0		Early Mature	Structural condition Fair. Physiological condition Fair. Competition - Adjacent trees. Ivy or climbing plant. Suppressed crown - Major. Unbalanced crown - Minor. Tree growing within rubble adjacent to ruin. Unable to inspect tree closely due to ivy cover.	13/11/2019	54.3	4.2	10-20	C2
Tree T429	1 Acer pseudoplatanus (Sycamore)	12.0	15	1	1.0	2.0	2.0	0.0					2.0		Semi Mature	Structural condition Fair. Physiological condition Fair. Competition - Adjacent trees. Suppressed crown - Minor. Unbalanced crown - Minor. Tree growing within rubble adjacent to ruin.	13/11/2019	10.2	1.8	10-20	C2

Stem **green** Estimated value

Stem **AVE** Average stem diameter for tree groups

Stem **COM** Combined stem diameter in accordance with BS5837

L.B. Height of lowest branch attachment (m) - where relevant

The survey information in this schedule has been gathered following a BS5837 survey for planning purposes. Where hazardous trees have been noted recommendations for works may have been made but this survey cannot be relied upon as a full health and safety assessment of the trees.

Page 24 of 38

Generated By

**MyTREES**  
tree management software

# 191012 - GA01 Project Shoreline, Baldoyle

Tree ID	No. Species	Height (m)	Stem diameter (cm)	No. of Stems	CROWN SPREAD (m)								Crown clearance (m)	L.B. (m)	Life stage	Condition Notes	Survey date	RPA (m <sup>2</sup> )	RPR (m)	Life expectancy (yrs)	BS Category
Tree T430	1 Acer pseudoplatanus (Sycamore)	13.0	22	1	2.0		2.0		2.0		2.0		4.0		Early Mature	Structural condition Fair. Physiological condition Fair. Competition - Adjacent trees. Tree growing within rubble adjacent to ruin.	13/11/2019	21.9	2.6	10-20	C2
Tree T431	1 Acer pseudoplatanus (Sycamore)	11.0	29 COM	6	1.0		4.0		3.0		4.0		0.0		Early Mature	Structural condition Fair. Physiological condition Fair. Competition - Adjacent trees. Multi-stemmed. Unbalanced crown - Minor. Tree growing within rubble adjacent to ruin.	13/11/2019	39.1	3.5	10-20	C2
Tree T432	1 Acer pseudoplatanus (Sycamore)	11.0	39 COM	9	5.0		4.0		3.0		4.0		0.0		Early Mature	Structural condition Fair. Physiological condition Fair. Ivy or climbing plant. Multi-stemmed. Tree growing within rubble adjacent to ruin.	13/11/2019	68.8	4.7	10-20	C2
Tree T433	1 Fraxinus excelsior (Ash)	7.0	17 COM	2	2.5		0.0		2.5		4.0		0.0		Semi Mature	Structural condition Fair. Physiological condition Fair. Competition - Adjacent trees. Deadwood - Minor. Ivy or climbing plant. Leaning trunk - Minor. Suppressed crown - Minor. Unbalanced crown - Minor. Tree growing within rubble adjacent to ruin. Unable to inspect tree closely due to ivy cover.	13/11/2019	13.8	2.1	10-20	C2
Tree T434	1 Acer pseudoplatanus (Sycamore)	7.0	17 COM	2	1.0		5.5		2.0		0.0		0.0		Early Mature	Structural condition Poor. Physiological condition Fair. Competition - Adjacent trees. Inappropriate retention costs. Suppressed crown - Major. Unbalanced crown - Major. Tree growing within rubble and in direct contact with ruin. Unable to inspect tree closely due to ivy cover.	16/11/2019	13.1	2.0	0-10	U
Tree T435	1 Acer pseudoplatanus (Sycamore)	11.0	27 COM	2	3.5		2.0		2.0		2.5		1.5		Early Mature	Structural condition Poor. Physiological condition Fair. Branch - Broken. Branch - Suspended. Competition - Adjacent trees. Deadwood - Minor. Ivy or climbing plant. Natural regeneration. Tree growing within rubble and adjacent to ruin. Unable to inspect tree closely due to ivy cover.	16/11/2019	35.0	3.3	10-20	C2

Stem **green** Estimated value

Stem **AVE** Average stem diameter for tree groups

Stem **COM** Combined stem diameter in accordance with BS5837

L.B. Height of lowest branch attachment (m) - where relevant

The survey information in this schedule has been gathered following a BS5837 survey for planning purposes. Where hazardous trees have been noted recommendations for works may have been made but this survey cannot be relied upon as a full health and safety assessment of the trees.

Page 25 of 38

Generated By

**MyTREES**  
tree management software

# 191012 - GA01 Project Shoreline, Baldoyle

Tree ID	No. Species	Height (m)	Stem diameter (cm)	No. of Stems	CROWN SPREAD (m)								Crown clearance (m)	L.B. (m)	Life stage	Condition Notes	Survey date	RPA (m <sup>2</sup> )	RPR (m)	Life expectancy (yrs)	BS Category
Tree T436	1 Fraxinus excelsior (Ash)	7.0	10	1	2.0		4.0		1.0		0.0		1.0		Semi Mature	Structural condition Poor. Physiological condition Fair. Competition - Adjacent trees. Suppressed crown - Major. Unbalanced crown - Major. Tree growing within rubble and adjacent to ruin.	16/11/2019	4.5	1.2	10-20	C2
Tree T437	1 Acer pseudoplatanus (Sycamore)	10.0	15	1	2.0		3.0		1.0		1.0		1.5		Semi Mature	Structural condition Fair. Physiological condition Fair. Competition - Adjacent trees. Deadwood - Minor. Ivy or climbing plant. Tree growing within rubble and adjacent to ruin.	16/11/2019	10.2	1.8	10-20	C2
Tree T438	1 Acer pseudoplatanus (Sycamore)	12.0	16	1	1.0		1.0		1.0		1.0		9.0		Semi Mature	Structural condition Fair. Physiological condition Fair. Competition - Adjacent trees. Deadwood - Minor. Ivy or climbing plant. Tree growing within rubble adjacent to ruin. Unable to inspect tree closely due to ivy cover.	16/11/2019	11.6	1.9	10-20	C2
Tree T439	1 Acer pseudoplatanus (Sycamore)	6.0	20	1	1.0		2.0		2.0		1.5		2.0		Early Mature	Structural condition Poor. Physiological condition Dead. Dead tree / trees. Tree growing within rubble adjacent to ruin.	16/11/2019	18.1	2.4	0-10	U
Tree T440	1 Fraxinus excelsior (Ash)	12.0	44 COM	6	4.0		4.0		4.0		2.0		0.0		Early Mature	Structural condition Poor. Physiological condition Fair. Deadwood - Minor. Excavation within root zone - Recent. Fork - Weak with included bark. Ivy or climbing plant. Multi-stemmed. Root damage - Severence. Significant excavation works have occurred within rooting area of tree. Unable to inspect tree closely due to ivy cover.	16/11/2019	87.9	5.3	10-20	C2
Tree T441	1 Acer pseudoplatanus (Sycamore)	11.0	29 COM	3	2.0		2.0		2.0		1.5		2.0		Early Mature	Structural condition Poor. Physiological condition Fair. Competition - Adjacent trees. Deadwood - Minor. Inappropriate retention costs. Ivy or climbing plant. Tree in direct contact with ruin. Unable to inspect tree closely due to ivy cover.	16/11/2019	39.2	3.5	10-20	C2

Stem **green** Estimated value

Stem **AVE** Average stem diameter for tree groups

Stem **COM** Combined stem diameter in accordance with BS5837

L.B. Height of lowest branch attachment (m) - where relevant

The survey information in this schedule has been gathered following a BS5837 survey for planning purposes. Where hazardous trees have been noted recommendations for works may have been made but this survey cannot be relied upon as a full health and safety assessment of the trees.

Page 26 of 38

Generated By

**MyTREES**  
tree management software



# 191012 - GA01 Project Shoreline, Baldoyle

Tree ID	No. Species	Height (m)	Stem diameter (cm)	No. of Stems	CROWN SPREAD (m)								Crown clearance (m)	L.B. (m)	Life stage	Condition Notes	Survey date	RPA (m <sup>2</sup> )	RPR (m)	Life expectancy (yrs)	BS Category
Tree T442	1 Acer pseudoplatanus (Sycamore)	10.0	20	1	3.5	1.5	1.5	1.0					3.0		Early Mature	Structural condition Fair. Physiological condition Fair. Competition - Adjacent trees. Deadwood - Minor. Ivy or climbing plant. Unbalanced crown - Minor. Tree growing within rubble adjacent to ruin. Unable to inspect tree closely due to ivy cover.	16/11/2019	18.1	2.4	10-20	C2
Tree T443	1 Acer pseudoplatanus (Sycamore)	14.0	53	1	3.0	4.0	4.0	3.0					4.0		Mature	Structural condition Fair. Physiological condition Fair. Deadwood - Minor. Ivy or climbing plant. Unable to inspect tree closely due to ivy cover.	16/11/2019	127.1	6.4	20-40	B2
Tree T444	1 Ulmus glabra (Wych Elm)	11.0	15	1	1.5	1.5	2.0	1.5					5.0		Semi Mature	Structural condition Fair. Physiological condition Fair. Competition - Adjacent trees. Deadwood - Minor. Tree growing within rubble adjacent to ruin.	16/11/2019	10.2	1.8	20-40	C2
Tree T445	1 Fraxinus excelsior (Ash)	9.0	9	1	1.0	1.0	1.0	1.0					7.0		Young	Structural condition Poor. Physiological condition Poor. Competition - Adjacent trees. Decline - Suspected. Leaning trunk - Minor. Tree growing within rubble adjacent to ruin.	16/11/2019	3.7	1.1	0-10	U
Tree T446	1 Acer pseudoplatanus (Sycamore)	10.0	18 COM	2	1.0	1.5	1.0	1.0					8.0		Early Mature	Structural condition Fair. Physiological condition Fair. Competition - Adjacent trees. Deadwood - Minor. Ivy or climbing plant. Tree growing within rubble adjacent to ruin. Unable to inspect tree closely due to ivy cover.	16/11/2019	14.7	2.2	10-20	C2
Tree T447	1 Ulmus glabra (Wych Elm)	8.0	14 COM	2	4.0	3.0	0.0	1.0					0.0		Semi Mature	Structural condition Fair. Physiological condition Fair. Competition - Adjacent trees. Ivy or climbing plant. Suppressed crown - Major. Unbalanced crown - Major. Unable to inspect tree closely due to ivy cover.	16/11/2019	9.0	1.7	10-20	C2
Tree T448	1 Acer pseudoplatanus (Sycamore)	12.0	25	1	0.0	3.0	7.0	1.0					4.0		Early Mature	Structural condition Fair. Physiological condition Fair. Competition - Adjacent trees. Deadwood - Minor. Suppressed crown - Major. Unbalanced crown - Major.	16/11/2019	28.3	3.0	20-40	C2

Stem **green** Estimated value

Stem **AVE** Average stem diameter for tree groups

Stem **COM** Combined stem diameter in accordance with BS5837

L.B. Height of lowest branch attachment (m) - where relevant

The survey information in this schedule has been gathered following a BS5837 survey for planning purposes. Where hazardous trees have been noted recommendations for works may have been made but this survey cannot be relied upon as a full health and safety assessment of the trees.

Page 27 of 38

# 191012 - GA01 Project Shoreline, Baldoyle

Tree ID	No. Species	Height (m)	Stem diameter (cm)	No. of Stems	CROWN SPREAD (m)								Crown clearance (m)	L.B. (m)	Life stage	Condition Notes	Survey date	RPA (m <sup>2</sup> )	RPR (m)	Life expectancy (yrs)	BS Category
					N	NE	E	SE	S	SW	W	NW									
Tree T449	1 Ulmus glabra (Wych Elm)	11.0	30	1	1.0		5.0		4.5		2.0		1.0		Early Mature	Structural condition Fair. Physiological condition Fair. Competition - Adjacent trees. Ivy or climbing plant. Leaning trunk - Minor. Suppressed crown - Minor. Unbalanced crown - Minor. Unable to inspect tree closely due to ivy cover.	16/11/2019	40.7	3.6	10-20	C2
Tree T450	1 Fraxinus excelsior (Ash)	14.0	56 COM	4	2.0		3.0		5.0		4.0		2.0		Mature	Structural condition Fair. Physiological condition Fair. Competition - Adjacent trees. Deadwood - Minor. Ivy or climbing plant. Suppressed crown - Minor. Unbalanced crown - Minor. Unable to inspect tree closely due to ivy cover.	16/11/2019	141.9	6.7	10-20	C2
Tree T451	1 Fraxinus excelsior (Ash)	14.0	49 COM	2	0.0		4.0		5.0		4.0		2.0		Mature	Structural condition Fair. Physiological condition Fair. Competition - Adjacent trees. Deadwood - Minor. Ivy or climbing plant. Suppressed crown - Minor. Unbalanced crown - Minor. Unable to inspect tree closely due to ivy cover.	16/11/2019	110.8	5.9	10-20	C2
Tree T452	1 Sambucus nigra (Elder)	5.0	25	1	2.0		0.0		2.0		3.0		1.0		Early Mature	Structural condition Fair. Physiological condition Fair. Competition - Adjacent trees. Deadwood - Minor. Ivy or climbing plant. Leaning trunk - Minor. Suppressed crown - Minor. Unbalanced crown - Minor. Unable to inspect tree closely due to ivy cover.	16/11/2019	28.3	3.0	10-20	C2
Tree T453	1 Acer pseudoplatanus (Sycamore)	11.0	42 COM	2	5.0		5.0		5.0		4.0		1.0		Early Mature	Structural condition Fair. Physiological condition Fair. Deadwood - Minor. Epicormic growth - Base. Ivy or climbing plant. Unable to inspect tree closely due to ivy cover.	16/11/2019	83.4	5.2	20-40	B2
Tree T454	1 Ulmus glabra (Wych Elm)	7.0	14	1	3.0		2.0		2.0		2.0		2.0		Semi Mature	Structural condition Fair. Physiological condition Fair. Ivy or climbing plant. Leaning trunk - Minor.	16/11/2019	8.9	1.7	10-20	C2
Tree T455	1 Fraxinus excelsior (Ash)	10.0	30	1	0.0		2.0		4.0		2.0		0.0		Early Mature	Structural condition Poor. Physiological condition Fair. Competition - Adjacent trees. Leaning trunk - Major. Suppressed crown - Major. Unbalanced crown - Major. Main stem is contorted.	16/11/2019	40.7	3.6	10-20	C2

Stem **green** Estimated value

Stem **AVE** Average stem diameter for tree groups

Stem **COM** Combined stem diameter in accordance with BS5837

L.B. Height of lowest branch attachment (m) - where relevant

The survey information in this schedule has been gathered following a BS5837 survey for planning purposes. Where hazardous trees have been noted recommendations for works may have been made but this survey cannot be relied upon as a full health and safety assessment of the trees.

Page 28 of 38

Generated By

**MyTREES**  
tree management software

# 191012 - GA01 Project Shoreline, Baldoyle

Tree ID	No. Species	Height (m)	Stem diameter (cm)	No. of Stems	CROWN SPREAD (m)								Crown clearance (m)	L.B. (m)	Life stage	Condition Notes	Survey date	RPA (m <sup>2</sup> )	RPR (m)	Life expectancy (yrs)	BS Category
N	NE	E	SE	S	SW	W	NW														
Tree T456	1 Ulmus glabra (Wych Elm)	9.0	18	1	0.0	1.5	2.0	1.5	0.0				0.0		Early Mature	Structural condition Fair. Physiological condition Fair. Competition - Adjacent trees. Ivy or climbing plant. Suppressed crown - Minor. Unable to inspect tree closely due to ivy cover.	16/11/2019	14.7	2.2	10-20	C2
Tree T457	1 Acer pseudoplatanus (Sycamore)	10.0	42 COM	8	4.0	4.0	4.0	4.0	0.0				0.0		Early Mature	Structural condition Fair. Physiological condition Fair. Access to inspect base - Restricted / obscured. Multi-stemmed. Unable to inspect tree closely due to dense scrub.	16/11/2019	81.4	5.1	20-40	C2
Tree T460	1 Ulmus glabra (Wych Elm)	9.0	15	1	0.0	3.0	5.0	4.0	0.0				0.0		Semi Mature	Structural condition Fair. Physiological condition Fair. Competition - Adjacent trees. Ivy or climbing plant. Suppressed crown - Major. Unbalanced crown - Major. Unable to inspect tree closely due to ivy cover.	16/11/2019	10.2	1.8	10-20	C2
Tree T464	1 Ulmus glabra (Wych Elm)	12.0	55 COM	3	4.5	4.0	3.5	4.5	0.0				0.0		Mature	Structural condition Fair. Physiological condition Fair. Deadwood - Minor. Epicormic growth - Base. Ivy or climbing plant. Unable to inspect tree closely due to ivy cover.	22/11/2019	138.0	6.6	20-40	B2
Tree T467	1 Fraxinus excelsior (Ash)	11.0	65	1	2.5	1.5	2.5	2.5	0.0				0.0		Mature	Structural condition Poor. Physiological condition Dead. Dead tree / trees.	22/11/2019	191.1	7.8	0-10	U
Tree T471	1 Fraxinus excelsior (Ash)	10.0	20 COM	2	2.0	3.0	4.0	5.0	1.0				1.0		Early Mature	Structural condition Fair. Physiological condition Fair. Competition - Adjacent trees. Deadwood - Minor. Suppressed crown - Minor. Unbalanced crown - Minor.	22/11/2019	19.2	2.5	10-20	C2
Tree T472	1 Ulmus glabra (Wych Elm)	10.0	24 COM	2	2.0	2.5	3.5	3.0	1.5				1.5		Early Mature	Structural condition Fair. Physiological condition Fair. Competition - Adjacent trees. Deadwood - Minor. Ivy or climbing plant.	22/11/2019	26.1	2.9	20-40	C2
Tree T473	1 Fagus sylvatica (Common Beech)	5.0	55	1	0.0	0.0	0.0	0.0	0.0				0.0		Mature	Structural condition Poor. Physiological condition Dead. Dead tree / trees. Habitat - High value. Ivy or climbing plant. Monolith.	22/11/2019	136.8	6.6	0-10	U

Stem **green** Estimated value

Stem **AVE** Average stem diameter for tree groups

Stem **COM** Combined stem diameter in accordance with BS5837

L.B. Height of lowest branch attachment (m) - where relevant

The survey information in this schedule has been gathered following a BS5837 survey for planning purposes. Where hazardous trees have been noted recommendations for works may have been made but this survey cannot be relied upon as a full health and safety assessment of the trees.

Page 29 of 38

Generated By

**MyTREES**  
tree management software

# 191012 - GA01 Project Shoreline, Baldoyle

Tree ID	No. Species	Height (m)	Stem diameter (cm)	No. of Stems	CROWN SPREAD (m)								Crown clearance (m)	L.B. (m)	Life stage	Condition Notes	Survey date	RPA (m <sup>2</sup> )	RPR (m)	Life expectancy (yrs)	BS Category
					N	NE	E	SE	S	SW	W	NW									
Group G478	50 Sambucus nigra (Elder)	5.0	18 AVE	1									0.0		Early Mature	Structural condition Fair. Physiological condition Fair. Branch - Broken. Competition - Adjacent trees. Deadwood - Minor. Ivy or climbing plant. Natural regeneration. Height and stem diameter are average for group. Area of naturally regenerated scrub and understorey trees. Access restricted and quantities estimated.	13/11/2019	14.7	2.2	10-20	C2
	20 Buddleja davidii (Buddleja)																				
	15 Acer pseudoplatanus (Sycamore)																				
Group G479	20 Acer pseudoplatanus (Sycamore)	7.0	14 AVE	1									0.0		Semi Mature	Structural condition Fair. Physiological condition Fair. Competition - Adjacent trees. Natural regeneration. Pruning wounds - Decayed. Pruning wounds - Historic. Height and stem diameter are average for group. Area of young and semi-mature natural regeneration. Access restricted and quantities estimated. Trees below electricity wires have been coppiced.	13/11/2019	8.9	1.7	20-40	C2
	15 Ulmus glabra (Wych Elm)																				
	10 Sambucus nigra (Elder)																				
	5 Crataegus monogyna (Common Hawthorn/Quick/May)																				

Stem **green** Estimated value

Stem **AVE** Average stem diameter for tree groups

Stem **COM** Combined stem diameter in accordance with BS5837

L.B. Height of lowest branch attachment (m) - where relevant

The survey information in this schedule has been gathered following a BS5837 survey for planning purposes. Where hazardous trees have been noted recommendations for works may have been made but this survey cannot be relied upon as a full health and safety assessment of the trees.

# 191012 - GA01 Project Shoreline, Baldoyle

Tree ID	No. Species	Height (m)	Stem diameter (cm)	No. of Stems	CROWN SPREAD (m)								Crown clearance (m)	L.B. (m)	Life stage	Condition Notes	Survey date	RPA (m <sup>2</sup> )	RPR (m)	Life expectancy (yrs)	BS Category
					N	NE	E	SE	S	SW	W	NW									
Group G480	80 Buddleja davidii (Buddleja)	4.0	15 AVE	1									0.0		Early Mature	Structural condition Fair. Physiological condition Fair. Competition - Adjacent trees. Natural regeneration. Height and stem diameter are average for group. Area of naturally regenerated scrub and understorey trees. Access restricted and quantities estimated.	13/11/2019	10.2	1.8	10-20	C2
	50 Sambucus nigra (Elder)																				
	20 Acer pseudoplatanus (Sycamore)																				
	10 Crataegus monogyna (Common Hawthorn/Quick/May)																				
	10 Ulmus glabra (Wych Elm)																				
Group G481	4 Sambucus nigra (Elder)	5.0	30 AVE	1									0.0		Mature	Structural condition Poor. Physiological condition Fair. Branch - Broken. Branch - Suspended. Competition - Adjacent trees. Deadwood - Minor. Ivy or climbing plant. Height and stem diameter are average for group.	16/11/2019	40.7	3.6	10-20	C2
Group G482	5 Sambucus nigra (Elder)	4.0	25 AVE	1									0.0		Mature	Structural condition Poor. Physiological condition Fair. Branch - Broken. Branch - Suspended. Competition - Adjacent trees. Deadwood - Minor. Decay / structural defect - Principal stems. Fallen tree / trees - Partial collapse. Fallen tree / trees - Whole tree. Ivy or climbing plant. Height and stem diameter are average for group.	16/11/2019	28.3	3.0	10-20	C2

Stem **green** Estimated value

Stem **AVE** Average stem diameter for tree groups

Stem **COM** Combined stem diameter in accordance with BS5837

L.B. Height of lowest branch attachment (m) - where relevant

The survey information in this schedule has been gathered following a BS5837 survey for planning purposes. Where hazardous trees have been noted recommendations for works may have been made but this survey cannot be relied upon as a full health and safety assessment of the trees.

# 191012 - GA01 Project Shoreline, Baldoyle

Tree ID	No.	Species	Height (m)	Stem diameter (cm)	No. of Stems	CROWN SPREAD (m)								Crown clearance (m)	L.B. (m)	Life stage	Condition Notes	Survey date	RPA (m <sup>2</sup> )	RPR (m)	Life expectancy (yrs)	BS Category
						N	NE	E	SE	S	SW	W	NW									
Group G483	7	Ulmus glabra (Wych Elm)	4.0	15 AVE	1								0.0		Early Mature	Structural condition Fair. Physiological condition Fair. Branch - Broken. Branch - Suspended. Competition - Adjacent trees. Deadwood - Minor. Fallen tree / trees - Partial collapse. Natural regeneration. Height and stem diameter are average for group. Understorey self-seeded trees, quantities estimated.	16/11/2019	10.2	1.8	10-20	C2	
	6	Buddleja davidii (Buddleja)																				
	5	Sambucus nigra (Elder)																				
Group G484	5	Buddleja davidii (Buddleja)	4.0	10 AVE	1								0.0		Semi Mature	Structural condition Fair. Physiological condition Fair. Natural regeneration. Height and stem diameter are average for group. Self-seeded trees, quantities estimated.	16/11/2019	4.5	1.2	10-20	C2	
	15	Salix sp. (Willow sp.)																				
Group G485	2	Buddleja davidii (Buddleja)	4.0	10 AVE	1								0.0		Semi Mature	Structural condition Fair. Physiological condition Fair. Natural regeneration. Height and stem diameter are average for group. Sparsely located self-seeded trees, quantities estimated.	16/11/2019	4.5	1.2	10-20	C2	
	10	Salix sp. (Willow sp.)																				
Hedge H486	80	Carpinus betulus (Hornbeam)	3.0	5 AVE	1								0.0		Young	Structural condition Fair. Physiological condition Fair. Height and stem diameter are average for group. Some trees are dead within hedgerow. Hedgerow unmanaged. Quantities estimated.	20/11/2019	1.1	0.6	10-20	C1	
Tree T487	1	Fraxinus excelsior (Ash)	10.0	50	1		4.0		3.0		4.0	5.0	1.0		Mature	Structural condition Fair. Physiological condition Poor. Access to inspect base - Not possible. Decline - Suspected. Deadwood - Minor. Excavation within root zone - Historic. Ivy or climbing plant. Tree not included on topographical survey, location estimated. Unable to inspect tree closely due to dense scrub. Tree is not tagged as access to stem is restricted.	20/11/2019	113.1	6.0	0-10	U	

Stem **green** Estimated value

Stem **AVE** Average stem diameter for tree groups

Stem **COM** Combined stem diameter in accordance with BS5837

L.B. Height of lowest branch attachment (m) - where relevant

The survey information in this schedule has been gathered following a BS5837 survey for planning purposes. Where hazardous trees have been noted recommendations for works may have been made but this survey cannot be relied upon as a full health and safety assessment of the trees.

Page 32 of 38

Generated By

**MyTREES**  
tree management software

# 191012 - GA01 Project Shoreline, Baldoyle

Tree ID	No. Species	Height (m)	Stem diameter (cm)	No. of Stems	CROWN SPREAD (m)								Crown clearance (m)	L.B. (m)	Life stage	Condition Notes	Survey date	RPA (m <sup>2</sup> )	RPR (m)	Life expectancy (yrs)	BS Category
Group G488	10 Crataegus monogyna (Common Hawthorn/Quick/May)	4.0	12 AVE	1									0.0		Semi Mature	Structural condition Fair. Physiological condition Fair. Natural regeneration. Height and stem diameter are average for group. Quantities and extent of group are estimated. Area neglected with natural regeneration occurring.	22/11/2019	6.5	1.4	10-20	C1
	8 Fraxinus excelsior (Ash)																				
	3 Buddleja davidii (Buddleja)																				
Group G496	6 Crataegus monogyna (Common Hawthorn/Quick/May)	5.0	15 AVE	1									0.0		Early Mature	Structural condition Fair. Physiological condition Fair. Competition - Adjacent trees. Ivy or climbing plant. Height and stem diameter are average for group. Understorey trees, quantities estimated.	22/11/2019	10.2	1.8	20-40	C2
	4 Ulmus glabra (Wych Elm)																				
Group G503	16 Fraxinus excelsior (Ash)	8.0	15 AVE	1									0.0		Semi Mature	Structural condition Fair. Physiological condition Fair. Competition - Adjacent trees. Ivy or climbing plant. Multi-stemmed. Natural regeneration. Height and stem diameter are average for group. Quantities estimated.	22/11/2019	10.2	1.8	10-20	C2
Group G509	4 Crataegus monogyna (Common Hawthorn/Quick/May)	3.0	15 AVE	1									0.0		Semi Mature	Structural condition Fair. Physiological condition Fair. Hedgerow - Neglected / overgrown. Natural regeneration. Height and stem diameter are average for group.	22/11/2019	10.2	1.8	10-20	C2
	1 Fraxinus excelsior (Ash)																				
	3 Salix sp. (Willow sp.)																				

Stem **green** Estimated value

Stem **AVE** Average stem diameter for tree groups

Stem **COM** Combined stem diameter in accordance with BS5837

L.B. Height of lowest branch attachment (m) - where relevant

The survey information in this schedule has been gathered following a BS5837 survey for planning purposes. Where hazardous trees have been noted recommendations for works may have been made but this survey cannot be relied upon as a full health and safety assessment of the trees.

Page 33 of 38

Generated By

**MyTREES**  
tree management software

# 191012 - GA01 Project Shoreline, Baldoyle

Tree ID	No. Species	Height (m)	Stem diameter (cm)	No. of Stems	CROWN SPREAD (m)								Crown clearance (m)	L.B. (m)	Life stage	Condition Notes	Survey date	RPA (m <sup>2</sup> )	RPR (m)	Life expectancy (yrs)	BS Category
Group G511	10 Buddleja davidii (Buddleja)	3.0	8 AVE	1	N	NE	E	SE	S	SW	W	NW	0.0		Semi Mature	Structural condition Fair. Physiological condition Fair. Natural regeneration. Height and stem diameter are average for group. Neglected area of land, natural regeneration occurring. Quantities estimated only. No significant trees present.	22/11/2019	2.9	1.0	10-20	C2
Tree T512	1 Fraxinus excelsior (Ash)	10.0	35	1	4.0		4.0		4.0		4.0		1.0		Early Mature	Structural condition Fair. Physiological condition Fair. Access to inspect base - Not possible. Crown conflict - Structure / boundary / wire / tree. Ivy or climbing plant. Tree not included on topographical survey, location estimated. Unable to inspect tree closely due to dense scrub. Tree is not tagged as access to stem is restricted.	22/11/2019	55.4	4.2	10-20	C2
Hedge H513	70 Crataegus monogyna (Common Hawthorn/Quick/May)	4.0	15 AVE	1									0.0		Early Mature	Structural condition Fair. Physiological condition Fair. Hedgerow - Neglected / overgrown. Ivy or climbing plant. Height and stem diameter are average for group. Quantities and extent of group are estimated. Access to area not possible due to dense scrub.	22/11/2019	10.2	1.8	10-20	C1
Group G514	50 Buddleja davidii (Buddleja) 10 Sambucus nigra (Elder)	3.0	8 AVE	1									0.0		Semi Mature	Structural condition Fair. Physiological condition Fair. Natural regeneration. Height and stem diameter are average for group. Neglected area of land, natural regeneration occurring. Quantities estimated only. No significant trees present.	22/11/2019	2.9	1.0	10-20	C2
Group G515	20 Salix sp. (Willow sp.)	3.0	8 AVE	1									0.0		Semi Mature	Structural condition Fair. Physiological condition Fair. Natural regeneration. Height and stem diameter are average for group. Neglected area of land, natural regeneration occurring. Quantities estimated only. No significant trees present.	22/11/2019	2.9	1.0	10-20	C2

Stem **green** Estimated value

Stem **AVE** Average stem diameter for tree groups

Stem **COM** Combined stem diameter in accordance with BS5837

L.B. Height of lowest branch attachment (m) - where relevant

The survey information in this schedule has been gathered following a BS5837 survey for planning purposes. Where hazardous trees have been noted recommendations for works may have been made but this survey cannot be relied upon as a full health and safety assessment of the trees.



# 191012 - GA01 Project Shoreline, Baldoyle

Tree ID	No. Species	Height (m)	Stem diameter (cm)	No. of Stems	CROWN SPREAD (m)								Crown clearance (m)	L.B. (m)	Life stage	Condition Notes	Survey date	RPA (m <sup>2</sup> )	RPR (m)	Life expectancy (yrs)	BS Category
Tree T516	1 Fraxinus excelsior (Ash)	6.0	40	1	3.0		3.0		3.0		3.0		0.0		Early Mature	Structural condition Poor. Physiological condition Poor. Die-back - Throughout crown. Decline - Evident / observed. Deadwood - Major. Ivy or climbing plant. Tree is not tagged as access to stem is restricted. Unable to inspect tree closely due to dense scrub.	22/11/2019	72.4	4.8	0-10	U
Tree T517	1 Fraxinus excelsior (Ash)	11.0	50	1		3.5		4.0		3.5		4.0	0.0		Mature	Structural condition Poor. Physiological condition Poor. Die-back - Throughout crown. Decline - Evident / observed. Deadwood - Major. Ivy or climbing plant. Tree is not tagged as access to stem is restricted. Unable to inspect tree closely due to dense scrub.	22/11/2019	113.1	6.0	0-10	U
Tree T518	1 Fraxinus excelsior (Ash)	9.0	35	1		2.5		4.0		4.0		3.0	0.0		Early Mature	Structural condition Fair. Physiological condition Fair. Access to inspect base - Not possible. Ivy or climbing plant. Unbalanced crown - Minor. Tree is not tagged as access to stem is restricted. Unable to inspect tree closely due to dense scrub.	22/11/2019	55.4	4.2	10-20	C2
Tree T519	1 Fraxinus excelsior (Ash)	8.0	40	1		4.0		4.0		4.0		4.0	0.0		Early Mature	Structural condition Fair. Physiological condition Fair. Access to inspect base - Not possible. Ivy or climbing plant. Tree is not tagged as access to stem is restricted. Unable to inspect tree closely due to dense scrub.	22/11/2019	72.4	4.8	10-20	C2
Group G520	9 Crataegus monogyna (Common Hawthorn/Quick/May) 4 Fraxinus excelsior (Ash)	5.0	15 AVE	1									0.0		Early Mature	Structural condition Fair. Physiological condition Fair. Access to inspect base - Not possible. Competition - Adjacent trees. Deadwood - Minor. Hedgerow - Neglected / overgrown. Ivy or climbing plant. Height and stem diameter are average for group. Quantities and extent of group are estimated. Area of neglected, sparsely located trees, remnants of a hedgerow. Access to area not possible.	22/11/2019	10.2	1.8	10-20	C1
Tree T521	1 Acer pseudoplatanus (Sycamore)	4.0	12	1	1.0		1.5		1.0		1.0		2.5		Semi Mature	Structural condition Fair. Physiological condition Poor. Die-back - Upper crown. Decline - Evident / observed. Root environment - Restricted.	22/11/2019	6.5	1.4	0-10	U

Stem **green** Estimated value

Stem **AVE** Average stem diameter for tree groups

Stem **COM** Combined stem diameter in accordance with BS5837

L.B. Height of lowest branch attachment (m) - where relevant

The survey information in this schedule has been gathered following a BS5837 survey for planning purposes. Where hazardous trees have been noted recommendations for works may have been made but this survey cannot be relied upon as a full health and safety assessment of the trees.

Page 35 of 38

Generated By

**MyTREES**  
tree management software

# 191012 - GA01 Project Shoreline, Baldoyle

Tree ID	No. Species	Height (m)	Stem diameter (cm)	No. of Stems	CROWN SPREAD (m)								Crown clearance (m)	L.B. (m)	Life stage	Condition Notes	Survey date	RPA (m <sup>2</sup> )	RPR (m)	Life expectancy (yrs)	BS Category
Tree T522	1 Acer pseudoplatanus (Sycamore)	4.0	10	1	1.0		1.5		1.5		1.0		2.0		Semi Mature	Structural condition Fair. Physiological condition Poor. Die-back - Upper crown. Decline - Evident / observed. Root environment - Restricted.	22/11/2019	4.5	1.2	0-10	U
Tree T523	1 Alnus cordata (Italian Alder)	3.5	16 COM	4	1.5		1.5		1.5		1.5		0.0		Semi Mature	Structural condition Fair. Physiological condition Good. Multi-stemmed. Root environment - Restricted.	22/11/2019	11.6	1.9	10-20	C2
Tree T524	1 Acer pseudoplatanus (Sycamore)	4.0	12	1	1.0		1.0		1.0		1.0		2.0		Semi Mature	Structural condition Poor. Physiological condition Poor. Die-back - Upper crown. Decline - Evident / observed. Root environment - Restricted.	22/11/2019	6.5	1.4	0-10	U
Tree T525	1 Acer pseudoplatanus (Sycamore)	4.0	8	1	1.0		1.0		1.0		1.0		2.0		Young	Structural condition Poor. Physiological condition Poor. Die-back - Upper crown. Decline - Evident / observed. Root environment - Restricted.	22/11/2019	2.9	1.0	0-10	U
Tree T526	1 Acer pseudoplatanus (Sycamore)	4.0	8	1	0.5		0.5		0.5		0.5		2.0		Young	Structural condition Poor. Physiological condition Dead. Dead tree / trees.	22/11/2019	2.9	1.0	0-10	U
Tree T527	1 Betula pendula (Silver Birch)	3.0	5	1	1.0		1.0		0.5		1.0		0.0		Young	Structural condition Fair. Physiological condition Fair. Natural regeneration. Root environment - Restricted.	22/11/2019	1.1	0.6	10-20	C2
Tree T528	1 Betula pendula (Silver Birch)	4.0	10	1	1.0		1.0		1.0		1.0		0.0		Semi Mature	Structural condition Fair. Physiological condition Fair. Natural regeneration. Root environment - Restricted.	22/11/2019	4.5	1.2	10-20	C2
Tree T529	1 Acer pseudoplatanus (Sycamore)	4.0	9	1	0.5		0.5		0.5		0.5		2.0		Young	Structural condition Poor. Physiological condition Poor. Die-back - Upper crown. Decline - Evident / observed. Root environment - Restricted.	22/11/2019	3.7	1.1	0-10	U
Tree T530	1 Alnus glutinosa (Common Alder)	2.0	10	1	1.0		1.0		1.0		1.0		0.0		Semi Mature	Structural condition Fair. Physiological condition Fair. Natural regeneration. Root environment - Restricted.	22/11/2019	4.5	1.2	10-20	C2

Stem **green** Estimated value

Stem **AVE** Average stem diameter for tree groups

Stem **COM** Combined stem diameter in accordance with BS5837

L.B. Height of lowest branch attachment (m) - where relevant

The survey information in this schedule has been gathered following a BS5837 survey for planning purposes. Where hazardous trees have been noted recommendations for works may have been made but this survey cannot be relied upon as a full health and safety assessment of the trees.

# 191012 - GA01 Project Shoreline, Baldoyle

Tree ID	No. Species	Height (m)	Stem diameter (cm)	No. of Stems	CROWN SPREAD (m)								Crown clearance (m)	L.B. (m)	Life stage	Condition Notes	Survey date	RPA (m <sup>2</sup> )	RPR (m)	Life expectancy (yrs)	BS Category
					N	NE	E	SE	S	SW	W	NW									
Tree T531	1 Acer pseudoplatanus (Sycamore)	4.0	9	1	1.0		1.0		1.0		1.0		2.0		Young	Structural condition Poor. Physiological condition Poor. Die-back - Upper crown. Decline - Evident / observed. Root environment - Restricted.	22/11/2019	3.7	1.1	0-10	U
Tree T532	1 Alnus glutinosa (Common Alder)	2.0	7 COM	2	1.0		1.0		1.0		0.5		0.0		Young	Structural condition Fair. Physiological condition Fair. Natural regeneration. Root environment - Restricted.	22/11/2019	2.3	0.8	10-20	C2
Tree T533	1 Alnus glutinosa (Common Alder)	3.0	7	1	1.0		1.0		1.0		1.0		0.0		Young	Structural condition Fair. Physiological condition Fair. Natural regeneration. Root environment - Restricted.	22/11/2019	2.2	0.8	10-20	C2
Tree T534	1 Alnus glutinosa (Common Alder)	5.0	14 COM	2	1.5		1.5		1.5		1.5		0.0		Semi Mature	Structural condition Fair. Physiological condition Fair. Natural regeneration. Root environment - Restricted.	22/11/2019	9.0	1.7	10-20	C2
Hedge H535	200 Crataegus monogyna (Common Hawthorn/Quick/May)	2.0	5 AVE	1									0.0		Young	Structural condition Good. Physiological condition Good. Young planted tree / trees. Height and stem diameter are average for group.	22/11/2019	1.1	0.6	40+	C2
Tree T536	1 Alnus glutinosa (Common Alder)	3.0	10	1	1.5		1.5		1.5		1.5		0.0		Semi Mature	Structural condition Fair. Physiological condition Fair. Natural regeneration. Root environment - Restricted.	22/11/2019	4.5	1.2	10-20	C2
Tree T537	1 Betula pendula (Silver Birch)	3.0	10	1	1.5		1.5		1.5		1.5		0.0		Semi Mature	Structural condition Fair. Physiological condition Fair. Natural regeneration. Root environment - Restricted.	22/11/2019	4.5	1.2	10-20	C2

Stem **green** Estimated value

Stem **AVE** Average stem diameter for tree groups

Stem **COM** Combined stem diameter in accordance with BS5837

L.B. Height of lowest branch attachment (m) - where relevant

The survey information in this schedule has been gathered following a BS5837 survey for planning purposes. Where hazardous trees have been noted recommendations for works may have been made but this survey cannot be relied upon as a full health and safety assessment of the trees.

Table 1 of BS5837 (2012)

Cascade chart for tree quality assessment

Category and definition	Criteria (including subcategories where appropriate)			Identification on plan
Trees unsuitable for retention (see note)				
<b>Category U</b>  Those in such a condition that they cannot realistically be retained as living trees in the context of the current land use for longer than 10 years	<ul style="list-style-type: none"><li>* Trees that have a serious, irremediable, structural defect, such that their early loss is expected due to collapse, including those that will become unviable after removal of other category U trees (e.g. where, for whatever reason, the loss of companion shelter cannot be mitigated by pruning)</li><li>* Trees that are dead or are showing signs of significant, immediate, and irreversible overall decline</li><li>* Trees infected with pathogens of significance to health and/or safety of other trees nearby, or very low quality trees suppressing adjacent trees of better quality</li></ul> NOTE Category U trees can have existing or potential conservation value which it might be desirable to preserve; see 4.5.7			<b>RED</b>
	<b>1 Mainly arboricultural qualities</b>	<b>2 Mainly landscape qualities</b>	<b>3 Mainly cultural values, including conservation</b>	
Trees to be considered for retention				
<b>Category A</b>  <b>Trees of high quality</b>  with an estimated remaining life expectancy of at least 40 years	Tree that are particularly good examples of their species, especially if rare or unusual; or those that are essential components of groups or formal or semi-formal arboricultural features (e.g. the dominant and/or principal trees within an avenue).	Trees, groups or woodlands of particular visual importance as arboricultural and/or landscape features.	Trees, groups or woodlands of significant conservation, historical, commemorative or other value (e.g. veteran trees or wood-pasture).	<b>GREEN</b>
<b>Category B</b>  <b>Trees of moderate quality</b>  with an estimated remaining life expectancy of at least 20 years	Trees that might be included in category A, but are downgraded because of impaired condition (e.g. presence of significant though remediable defects, including unsympathetic past management and storm damage), such that they are unlikely to be suitable for retention for beyond 40 years; or trees lacking the special quality necessary to merit the category A designation.	Trees present in numbers, usually growing as groups or woodlands, such that they attract a higher collective rating than they might as individuals; or trees occurring as collectives but situated so as to make little visual contribution to the wider locality.	Trees with material conservation or other cultural value.	<b>BLUE</b>
<b>Category C</b>  <b>Trees of low quality</b>  with an estimated remaining life expectancy of at least 10 years, or young trees with a stem diameter below 150 mm	Unremarkable trees of very limited merit or such impaired condition that they do not qualify in higher categories.	Trees present in groups or woodlands, but without this conferring on them significantly greater collective landscape value; and/or trees offering low or only temporary/transient landscape benefits.	Trees with no material conservation or other cultural value.	<b>GREY</b>

# 191012-PD-12-B - Planning Tree Works Schedule

191012 - Project Shoreline, Baldoyle

CHARLES MCCORKELL  
ARBORICULTURAL CONSULTANCY

ID	No. / Species	BS5837 Category	Purpose of works Recommended works	Status
G488	3 <i>Buddleja davidii</i> Buddleja	C1	To facilitate development Fell - Ground level. - Part removal of small section of hedgerow as highlighted on the Tree Removals Plan.	Proposed
	10 <i>Crataegus monogyna</i> Common Hawthorn/Quick/May			
	8 <i>Fraxinus excelsior</i> Ash			
G509	4 <i>Crataegus monogyna</i> Common Hawthorn/Quick/May	C2	To facilitate development Fell - Ground level.	Proposed
	1 <i>Fraxinus excelsior</i> Ash			
	3 <i>Salix</i> sp. Willow sp.			
G511	10 <i>Buddleja davidii</i> Buddleja	C2	To facilitate development Fell - Ground level.	Proposed
T521	1 <i>Acer pseudoplatanus</i> Sycamore	U	To facilitate development Fell - Ground level.	Proposed
T522	1 <i>Acer pseudoplatanus</i> Sycamore	U	To facilitate development Fell - Ground level.	Proposed
T523	1 <i>Alnus cordata</i> Italian Alder	C2	To facilitate development Fell - Ground level.	Proposed
T524	1 <i>Acer pseudoplatanus</i> Sycamore	U	To facilitate development Fell - Ground level.	Proposed
T525	1 <i>Acer pseudoplatanus</i> Sycamore	U	To facilitate development Fell - Ground level.	Proposed
T526	1 <i>Acer pseudoplatanus</i> Sycamore	U	To facilitate development Fell - Ground level.	Proposed
T527	1 <i>Betula pendula</i> Silver Birch	C2	To facilitate development Fell - Ground level.	Proposed
T528	1 <i>Betula pendula</i> Silver Birch	C2	To facilitate development Fell - Ground level.	Proposed
T529	1 <i>Acer pseudoplatanus</i> Sycamore	U	To facilitate development Fell - Ground level.	Proposed
T530	1 <i>Alnus glutinosa</i> Common Alder	C2	To facilitate development Fell - Ground level.	Proposed
T531	1 <i>Acer pseudoplatanus</i> Sycamore	U	To facilitate development Fell - Ground level.	Proposed
T532	1 <i>Alnus glutinosa</i> Common Alder	C2	To facilitate development Fell - Ground level.	Proposed

ID	No. / Species	BS5837 Category	Purpose of works Recommended works	Status
T533	1 <i>Alnus glutinosa</i> Common Alder	C2	To facilitate development Fell - Ground level.	Proposed
T534	1 <i>Alnus glutinosa</i> Common Alder	C2	To facilitate development Fell - Ground level.	Proposed
H535	200 <i>Crataegus monogyna</i> Common Hawthorn/Quick/May	C2	To facilitate development Fell - Ground level.	Proposed
T536	1 <i>Alnus glutinosa</i> Common Alder	C2	To facilitate development Fell - Ground level.	Proposed
T537	1 <i>Betula pendula</i> Silver Birch	C2	To facilitate development Fell - Ground level.	Proposed

## Appendix B - Plans

Document	Reference	Revision
Tree Survey Plan	191012-P-10	B
Tree Removals Plan	191012-P-11	B

**Address:** 12 Churchfield Grove, Ashbourne, Co. Meath

**Email:** [charles@cmarbor.com](mailto:charles@cmarbor.com)

**Tel:** +353 85 843 7015

**Web:** [www.cmarbor.com](http://www.cmarbor.com)